

Television Academy

2014 Primetime Emmy Awards Ballot



Outstanding Lead Actor In A Comedy Series

For a continuing performance in a comedy series. Emmy to performer. NOTE: VOTE FOR NO MORE THAN SIX achievements in this category that you have seen and feel are worthy of nomination. (More than six votes in this category will void all votes in this category.) Photos, color or black & white, were optional.

001 **Tim Allen**
as Mike Baxter
Last Man Standing



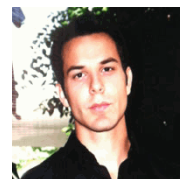
002 **Blake Anderson**
as Blake Henderson
Workaholics



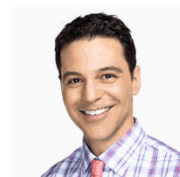
003 **Will Arnett**
as Nathan Miller
The Millers



004 **Skylar Astin**
as Brody Moyer
Ground Floor



005 **David Alan Basche**
as Stuart Gardner
The Exes





Outstanding Lead Actor In A Comedy Series

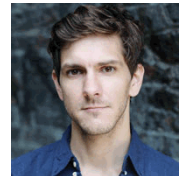
For a continuing performance in a comedy series. Emmy to performer. NOTE: VOTE FOR NO MORE THAN SIX achievements in this category that you have seen and feel are worthy of nomination. (More than six votes in this category will void all votes in this category.) Photos, color or black & white, were optional.

006

Mathew Baynton

as Sam

The Wrong Mans

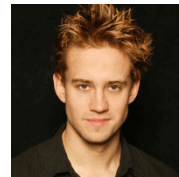


007

Nick Brown

as Deputy Eli Brocius

QuickDraw



008

Steve Byrne

as Steve Sullivan

Sullivan & Son



009

Louis C.K.

as Louie

Louie



010

Cedric "The Entertainer"

as Boyce Ballentine

The Soul Man

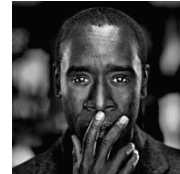




Outstanding Lead Actor In A Comedy Series

For a continuing performance in a comedy series. Emmy to performer. NOTE: VOTE FOR NO MORE THAN SIX achievements in this category that you have seen and feel are worthy of nomination. (More than six votes in this category will void all votes in this category.) Photos, color or black & white, were optional.

011 **Don Cheadle**
as Marty Kaan
House of Lies



012 **Robert Corddry**
as Dr. Blake Downs
Childrens Hospital



013 **James Corden**
as Phil
The Wrong Mans



014 **Jonathan Cryer**
as Alan Harper
Two And A Half Men



015 **Andy Daly**
as Forrest MacNeil
Review





Outstanding Lead Actor In A Comedy Series

For a continuing performance in a comedy series. Emmy to performer. NOTE: VOTE FOR NO MORE THAN SIX achievements in this category that you have seen and feel are worthy of nomination. (More than six votes in this category will void all votes in this category.) Photos, color or black & white, were optional.

016

Kevin Daniels

as Hank

Sirens



017

Adam Devine

as Adam DeMamp

Workaholics



018

David Duchovny

as Hank Moody

Californication



019

Donald Faison

as Phil Chase

The Exes



020

Neil Flynn

as Mike Heck

The Middle





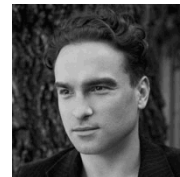
Outstanding Lead Actor In A Comedy Series

For a continuing performance in a comedy series. Emmy to performer. NOTE: VOTE FOR NO MORE THAN SIX achievements in this category that you have seen and feel are worthy of nomination. (More than six votes in this category will void all votes in this category.) Photos, color or black & white, were optional.

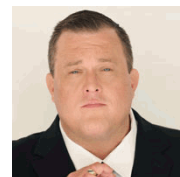
021 **Michael J. Fox**
as Mike Henry
The Michael J. Fox Show



022 **Johnny Galecki**
as Leonard Hofstadter
The Big Bang Theory



023 **Billy Gardell**
as Mike Biggs
Mike & Molly



024 **Jeff Garlin**
as Murray Goldberg
The Goldbergs



025 **Ricky Gervais**
as Derek
Derek





Outstanding Lead Actor In A Comedy Series

For a continuing performance in a comedy series. Emmy to performer. NOTE: VOTE FOR NO MORE THAN SIX achievements in this category that you have seen and feel are worthy of nomination. (More than six votes in this category will void all votes in this category.) Photos, color or black & white, were optional.

026

John Goodman
as Senator Gil John Biggs
Alpha House



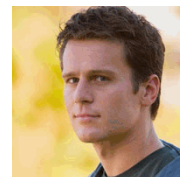
027

Seth Green
as Eli Sachs
Dads



028

Jonathan Groff
as Patrick
Looking



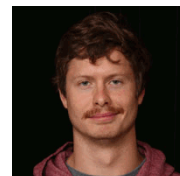
029

Kevin Hart
as Himself
Real Husbands of Hollywood



030

Anders Holm
as Anders Holmvik
Workaholics





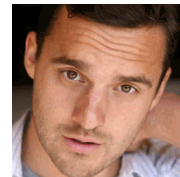
Outstanding Lead Actor In A Comedy Series

For a continuing performance in a comedy series. Emmy to performer. NOTE: VOTE FOR NO MORE THAN SIX achievements in this category that you have seen and feel are worthy of nomination. (More than six votes in this category will void all votes in this category.) Photos, color or black & white, were optional.

031 **Jim Jefferies**
as Jim
Legit



032 **Jake Johnson**
as Nick Miller
New Girl



033 **Greg Kinnear**
as Keegan Deane
Rake



034 **Wayne Knight**
as Haskell Lutz
The Exes



035 **Ashton Kutcher**
as Walden Schmidt
Two And A Half Men





Outstanding Lead Actor In A Comedy Series

For a continuing performance in a comedy series. Emmy to performer. NOTE: VOTE FOR NO MORE THAN SIX achievements in this category that you have seen and feel are worthy of nomination. (More than six votes in this category will void all votes in this category.) Photos, color or black & white, were optional.

036

Tyler Labine
as Kevin Pacalioğlu
Deadbeat



037

Joey Lawrence
as Joe Longo
Melissa and Joey



038

Matt LeBlanc
as Matt LeBlanc
Episodes



039

John Lehr
as Sheriff John Henry Hoyle
QuickDraw



040

George Lopez
as George
Saint George





Outstanding Lead Actor In A Comedy Series

For a continuing performance in a comedy series. Emmy to performer. NOTE: VOTE FOR NO MORE THAN SIX achievements in this category that you have seen and feel are worthy of nomination. (More than six votes in this category will void all votes in this category.) Photos, color or black & white, were optional.

041 **Rob Lowe**
as Chris Traeger
Parks and Recreation



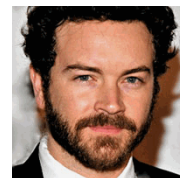
042 **William H. Macy**
as Frank Gallagher
Shameless



043 **Marc Maron**
as Marc Maron
Maron



044 **Danny Masterson**
as Milo
Men at Work



045 **Danny McBride**
as Kenny Powers
Eastbound & Down





Outstanding Lead Actor In A Comedy Series

For a continuing performance in a comedy series. Emmy to performer. NOTE: VOTE FOR NO MORE THAN SIX achievements in this category that you have seen and feel are worthy of nomination. (More than six votes in this category will void all votes in this category.) Photos, color or black & white, were optional.

046

Joel McHale
as Jeff Winger
Community



047

Christopher Meloni
as Jack
Surviving Jack



048

Stephen Merchant
as Stuart Pritchard
Hello Ladies



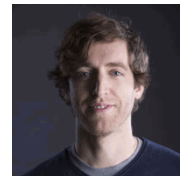
049

Chris Messina
as Dr. Danny Castellano
The Mindy Project



050

Thomas Middleditch
as Richard
Silicon Valley





Outstanding Lead Actor In A Comedy Series

For a continuing performance in a comedy series. Emmy to performer. NOTE: VOTE FOR NO MORE THAN SIX achievements in this category that you have seen and feel are worthy of nomination. (More than six votes in this category will void all votes in this category.) Photos, color or black & white, were optional.

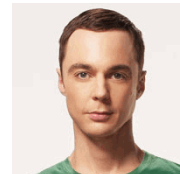
051 **Michael Mosley**
as Johnny
Sirens



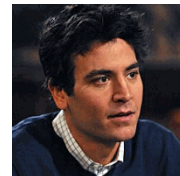
052 **Chris O'Dowd**
as Tom Chadwick
Family Tree



053 **Jim Parsons**
as Sheldon Cooper
The Big Bang Theory



054 **Josh Radnor**
as Ted Mosby
How I Met Your Mother



055 **Terry Ray**
as Jimmy Randall
From HERE On OUT





Outstanding Lead Actor In A Comedy Series

For a continuing performance in a comedy series. Emmy to performer. NOTE: VOTE FOR NO MORE THAN SIX achievements in this category that you have seen and feel are worthy of nomination. (More than six votes in this category will void all votes in this category.) Photos, color or black & white, were optional.

056

Andy Samberg
as Detective Jake Peralta
Brooklyn Nine-Nine



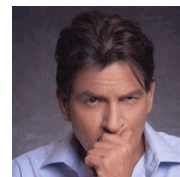
057

Adam Scott
as Ben Wyatt
Parks and Recreation



058

Charlie Sheen
as Charlie Goodson
Anger Management



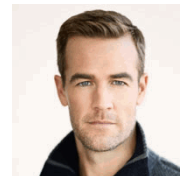
059

J.K. Simmons
as Mel Fisher
Growing Up Fisher



060

James Van Der Beek
as Will
Friends With Better Lives





Outstanding Lead Actor In A Comedy Series

For a continuing performance in a comedy series. Emmy to performer. NOTE: VOTE FOR NO MORE THAN SIX achievements in this category that you have seen and feel are worthy of nomination. (More than six votes in this category will void all votes in this category.) Photos, color or black & white, were optional.

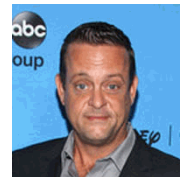
061

Steven Van Zandt
as Frank Tagliano
Lilyhammer



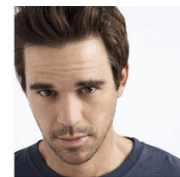
062

Lenny Venito
as Marty Weaver
The Neighbors



063

David Walton
as Will
About A Boy



064

Bradley Whitford
as Pete Harrison
Trophy Wife



065

Robin Williams
as Simon Roberts
The Crazy Ones



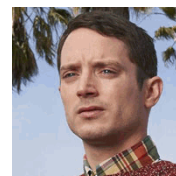


Outstanding Lead Actor In A Comedy Series

For a continuing performance in a comedy series. Emmy to performer. NOTE: VOTE FOR NO MORE THAN SIX achievements in this category that you have seen and feel are worthy of nomination. (More than six votes in this category will void all votes in this category.) Photos, color or black & white, were optional.

066

Elijah Wood
as Ryan Newman
Wilfred



End of Category



Outstanding Lead Actor In A Drama Series

For a continuing performance in a drama series. Emmy to performer. NOTE: VOTE FOR NO MORE THAN SIX achievements in this category that you have seen and feel are worthy of nomination. (More than six votes in this category will void all votes in this category.) Photos, color or black & white, were optional.

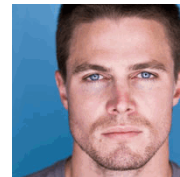
067

Patrick J. Adams
as Mike Ross
Suits



068

Stephen Amell
as Oliver Queen
Arrow



069

Kevin Bacon
as Ryan Hardy
The Following



070

Simon Baker
as Patrick Jane
The Mentalist



071

Jason Beghe
as Sergeant Hank Voight
Chicago P.D.





Outstanding Lead Actor In A Drama Series

For a continuing performance in a drama series. Emmy to performer. NOTE: VOTE FOR NO MORE THAN SIX achievements in this category that you have seen and feel are worthy of nomination. (More than six votes in this category will void all votes in this category.) Photos, color or black & white, were optional.

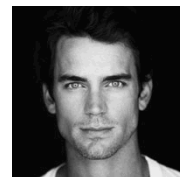
072 **Jamie Bell**
as Abraham Woodhull
Turn



073 **Demian Bichir**
as Marco Ruiz
The Bridge



074 **Matt Bomer**
as Neal Caffrey
White Collar



075 **Hugh Bonneville**
as Robert, Earl of Grantham
Downton Abbey



076 **David Boreanaz**
as Seeley Booth
Bones





Outstanding Lead Actor In A Drama Series

For a continuing performance in a drama series. Emmy to performer. NOTE: VOTE FOR NO MORE THAN SIX achievements in this category that you have seen and feel are worthy of nomination. (More than six votes in this category will void all votes in this category.) Photos, color or black & white, were optional.

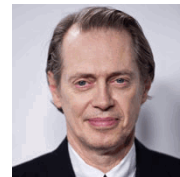
077

Billy Burke
as Miles Matheson
Revolution



078

Steve Buscemi
as Nucky Thompson
Boardwalk Empire



079

Billy Campbell
as Dr. Alan Farragut
Helix



080

Jim Caviezel
as John Reese
Person of Interest



081

LL Cool J
as Sam Hanna
NCIS: Los Angeles





Outstanding Lead Actor In A Drama Series

For a continuing performance in a drama series. Emmy to performer. NOTE: VOTE FOR NO MORE THAN SIX achievements in this category that you have seen and feel are worthy of nomination. (More than six votes in this category will void all votes in this category.) Photos, color or black & white, were optional.

082 **Bryan Cranston**
as Walter White
Breaking Bad



083 **Hugh Dancy**
as Will Graham
Hannibal



084 **Jeff Daniels**
as Will McAvoy
The Newsroom



085 **Ted Danson**
as DB Russell
CSI: Crime Scene Investigation



086 **Patrick Duffy**
as Bobby Ewing
Dallas





Outstanding Lead Actor In A Drama Series

For a continuing performance in a drama series. Emmy to performer. NOTE: VOTE FOR NO MORE THAN SIX achievements in this category that you have seen and feel are worthy of nomination. (More than six votes in this category will void all votes in this category.) Photos, color or black & white, were optional.

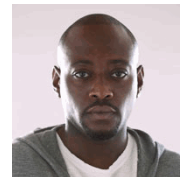
087

Michael Emerson
as Harold Finch
Person of Interest



088

Omar Epps
as J. Martin Bellamy
Resurrection



089

Charles Esten
as Deacon Claybourne
Nashville



090

Nathan Fillion
as Richard Castle
Castle



091

Travis Fimmel
as Ragnar Lothbrok
Vikings



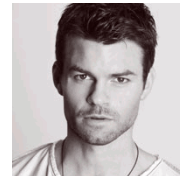


Outstanding Lead Actor In A Drama Series

For a continuing performance in a drama series. Emmy to performer. NOTE: VOTE FOR NO MORE THAN SIX achievements in this category that you have seen and feel are worthy of nomination. (More than six votes in this category will void all votes in this category.) Photos, color or black & white, were optional.

092

Daniel Gillies
as Elijah Mikaelson
The Originals



093

David Giuntoli
as Nick Burkhardt
Grimm



094

Mark-Paul Gosselaar
as Peter Bash
Franklin & Bash



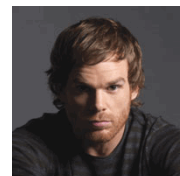
095

Clark Gregg
as Agent Phil Coulson
Marvel's Agents of S.H.I.E.L.D.



096

Michael C. Hall
as Dexter Morgan
Dexter





Outstanding Lead Actor In A Drama Series

For a continuing performance in a drama series. Emmy to performer. NOTE: VOTE FOR NO MORE THAN SIX achievements in this category that you have seen and feel are worthy of nomination. (More than six votes in this category will void all votes in this category.) Photos, color or black & white, were optional.

097

Jon Hamm
as Donald Draper
Mad Men



098

Omari Hardwick
as Andre
Being Mary Jane



099

Mark Harmon
as Leroy Jethro Gibbs
NCIS



100

Woody Harrelson
as Martin Hart
True Detective



101

Josh Henderson
as John Ross Ewing
Dallas





Outstanding Lead Actor In A Drama Series

For a continuing performance in a drama series. Emmy to performer. NOTE: VOTE FOR NO MORE THAN SIX achievements in this category that you have seen and feel are worthy of nomination. (More than six votes in this category will void all votes in this category.) Photos, color or black & white, were optional.

102 **Freddie Highmore**
as Norman Bates
Bates Motel



103 **Charlie Hunnam**
as Jackson "Jax" Teller
Sons Of Anarchy



104 **Joel Kinnaman**
as Stephen Holder
The Killing



105 **Taylor Kinney**
as Kelly Severide
Chicago Fire



106 **Erik Knudsen**
as Alec Sadler
Continuum

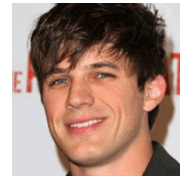




Outstanding Lead Actor In A Drama Series

For a continuing performance in a drama series. Emmy to performer. NOTE: VOTE FOR NO MORE THAN SIX achievements in this category that you have seen and feel are worthy of nomination. (More than six votes in this category will void all votes in this category.) Photos, color or black & white, were optional.

107 **Matthew Lanter**
as Roman
Star-Crossed



108 **Damian Lewis**
as Nicholas Brody
Homeland



109 **Andrew Lincoln**
as Rick Grimes
The Walking Dead



110 **Gabriel Macht**
as Harvey Specter
Suits



111 **Matthew McConaughey**
as Rust Cohle
True Detective





Outstanding Lead Actor In A Drama Series

For a continuing performance in a drama series. Emmy to performer. NOTE: VOTE FOR NO MORE THAN SIX achievements in this category that you have seen and feel are worthy of nomination. (More than six votes in this category will void all votes in this category.) Photos, color or black & white, were optional.

112 **Eric McCormack**
as Daniel Pierce
Perception



113 **Kevin McKidd**
as Owen Hunt
Grey's Anatomy



114 **Jake McLaughlin**
as Tate
Believe



115 **Breckin Meyer**
as Jared Franklin
Franklin & Bash



116 **Jonathan Rhys Meyers**
as Dracula, Alexander Grayson, Vlad Tepes
Dracula





Outstanding Lead Actor In A Drama Series

For a continuing performance in a drama series. Emmy to performer. NOTE: VOTE FOR NO MORE THAN SIX achievements in this category that you have seen and feel are worthy of nomination. (More than six votes in this category will void all votes in this category.) Photos, color or black & white, were optional.

117 **Mads Mikkelsen**
as Dr. Hannibal Lecter
Hannibal



118 **Jonny Lee Miller**
as Sherlock Holmes
Elementary



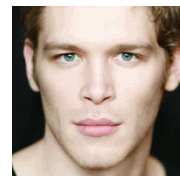
119 **Tom Mison**
as Ichabod Crane
Sleepy Hollow



120 **Jeffrey Dean Morgan**
as Ike Evans
Magic City



121 **Joseph Morgan**
as Klaus Mikaelson
The Originals



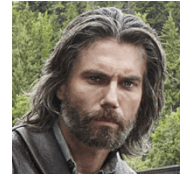


Outstanding Lead Actor In A Drama Series

For a continuing performance in a drama series. Emmy to performer. NOTE: VOTE FOR NO MORE THAN SIX achievements in this category that you have seen and feel are worthy of nomination. (More than six votes in this category will void all votes in this category.) Photos, color or black & white, were optional.

122

Anson Mount
as Cullen Bohannon
Hell On Wheels



123

Stephen Moyer
as Bill Compton
True Blood



124

Dylan Neal
as Jack Griffith
Debbie Macomber's Cedar Cove



125

Dean Norris
as James "Big Jim" Rennie
Under The Dome



126

Chris O'Donnell
as G. Callen
NCIS: Los Angeles





Outstanding Lead Actor In A Drama Series

For a continuing performance in a drama series. Emmy to performer. NOTE: VOTE FOR NO MORE THAN SIX achievements in this category that you have seen and feel are worthy of nomination. (More than six votes in this category will void all votes in this category.) Photos, color or black & white, were optional.

127

Alex O'Loughlin
as Steve McGarrett
Hawaii Five-0



128

Timothy Olyphant
as Deputy U.S. Marshal Raylan Givens
Justified



129

Peter Parros
as David Harrington
Tyler Perry's The Haves And The Have Nots



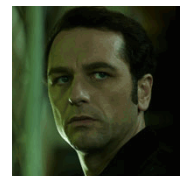
130

Jeremy Piven
as Harry Selfridge
Mr Selfridge (Masterpiece)



131

Matthew Rhys
as Philip Jennings
The Americans





Outstanding Lead Actor In A Drama Series

For a continuing performance in a drama series. Emmy to performer. NOTE: VOTE FOR NO MORE THAN SIX achievements in this category that you have seen and feel are worthy of nomination. (More than six votes in this category will void all votes in this category.) Photos, color or black & white, were optional.

132

Tom Riley
as Leonardo Da Vinci
Da Vinci's Demons



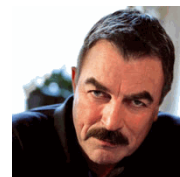
133

Liev Schreiber
as Ray Donovan
Ray Donovan



134

Tom Selleck
as Frank Reagan
Blue Bloods



135

Michael Sheen
as Dr. William Masters
Masters of Sex



136

Ian Somerhalder
as Damon Salvatore
The Vampire Diaries





Outstanding Lead Actor In A Drama Series

For a continuing performance in a drama series. Emmy to performer. NOTE: VOTE FOR NO MORE THAN SIX achievements in this category that you have seen and feel are worthy of nomination. (More than six votes in this category will void all votes in this category.) Photos, color or black & white, were optional.

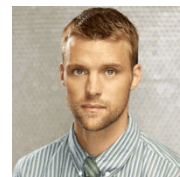
137 **Kevin Spacey**
as Francis Underwood
House of Cards



138 **James Spader**
as Raymond Reddington
The Blacklist



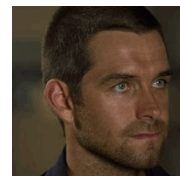
139 **Jesse Spencer**
as Matthew Casey
Chicago Fire



140 **Sullivan Stapleton**
as Sgt. Damien Scott
Strike Back



141 **Anthony Starr**
as Lucas Hood
Banshee





Outstanding Lead Actor In A Drama Series

For a continuing performance in a drama series. Emmy to performer. NOTE: VOTE FOR NO MORE THAN SIX achievements in this category that you have seen and feel are worthy of nomination. (More than six votes in this category will void all votes in this category.) Photos, color or black & white, were optional.

142 **Toby Stephens**
as Captain Flint
Black Sails



143 **Mark Strong**
as Frank Agnew
Low Winter Sun



144 **Daniel Sunjata**
as Paul Briggs
Graceland



145 **Robert Taylor**
as Sheriff Walt Longmire
Longmire



146 **Aaron Tveit**
as Mike Warren
Graceland

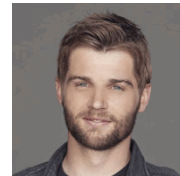




Outstanding Lead Actor In A Drama Series

For a continuing performance in a drama series. Emmy to performer. NOTE: VOTE FOR NO MORE THAN SIX achievements in this category that you have seen and feel are worthy of nomination. (More than six votes in this category will void all votes in this category.) Photos, color or black & white, were optional.

147 **Mike Vogel**
as Dale "Barbie" Barbara
Under The Dome



148 **Dylan Walsh**
as Al Burns
Unforgettable



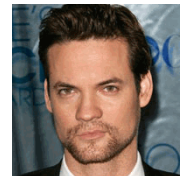
149 **Michael Weatherly**
as Anthony DiNozzo
NCIS



150 **Victor Webster**
as Carlos Fonnegra
Continuum



151 **Shane West**
as John Alden
Salem



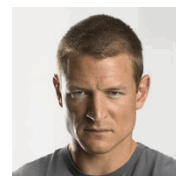


Outstanding Lead Actor In A Drama Series

For a continuing performance in a drama series. Emmy to performer. NOTE: VOTE FOR NO MORE THAN SIX achievements in this category that you have seen and feel are worthy of nomination. (More than six votes in this category will void all votes in this category.) Photos, color or black & white, were optional.

152

Philip Winchester
as Sgt. Michael Stonebridge
Strike Back



153

Noah Wyle
as Tom Mason
Falling Skies



End of Category



Outstanding Lead Actor In A Miniseries Or A Movie

For a performance in a miniseries or a movie. Emmy to performer. NOTE: VOTE FOR NO MORE THAN SIX achievements in this category that you have seen and feel are worthy of nomination. (More than six votes in this category will void all votes in this category.) Photos, color or black & white, were optional.

154

Patrick J. Adams
as Guy Woodhouse
Rosemary's Baby



155

Paul Adelstein
as Aaron Royal
Return To Zero



156

Jon Bernthal
as Joe Teague
Mob City



157

Dominic Cooper
as Ian Fleming
Fleming: The Man Who Would Be Bond



158

Benedict Cumberbatch
as Sherlock Holmes
Sherlock: His Last Vow (Masterpiece)

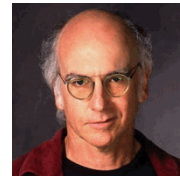




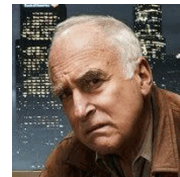
Outstanding Lead Actor In A Miniseries Or A Movie

For a performance in a miniseries or a movie. Emmy to performer. NOTE: VOTE FOR NO MORE THAN SIX achievements in this category that you have seen and feel are worthy of nomination. (More than six votes in this category will void all votes in this category.) Photos, color or black & white, were optional.

159 **Larry David**
as Nathan/Rolly
Clear History



160 **Jeffrey DeMunn**
as Hal Morrison
Mob City



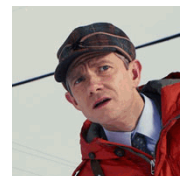
161 **Chiwetel Ejiofor**
as Louis Lester
Dancing On The Edge



162 **Idris Elba**
as John Luther
Luther



163 **Martin Freeman**
as Lester Nygaard
Fargo





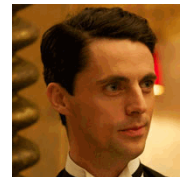
Outstanding Lead Actor In A Miniseries Or A Movie

For a performance in a miniseries or a movie. Emmy to performer. NOTE: VOTE FOR NO MORE THAN SIX achievements in this category that you have seen and feel are worthy of nomination. (More than six votes in this category will void all votes in this category.) Photos, color or black & white, were optional.

164 **Andy Garcia**
as Duncan
Christmas In Conway (Hallmark Hall of Fame)



165 **Matthew Goode**
as Stanley Mitchell
Dancing On The Edge



166 **Martin Henderson**
as Harold Jensen
The Red Road



167 **Tom Hiddleston**
as Prince Hal and King Henry V
The Hollow Crown (Great Performances)



168 **Emile Hirsch**
as Clyde Barrow
Bonnie & Clyde





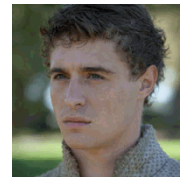
Outstanding Lead Actor In A Miniseries Or A Movie

For a performance in a miniseries or a movie. Emmy to performer. NOTE: VOTE FOR NO MORE THAN SIX achievements in this category that you have seen and feel are worthy of nomination. (More than six votes in this category will void all votes in this category.) Photos, color or black & white, were optional.

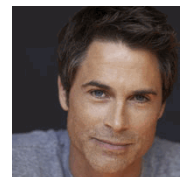
169 **Jeremy Irons**
as King Henry IV
The Hollow Crown (Great Performances)



170 **Max Irons**
as King Edward IV
The White Queen



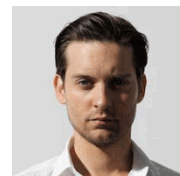
171 **Rob Lowe**
as John F. Kennedy
Killing Kennedy



172 **Richard Madden**
as Bill Haskell
Klondike



173 **Tobey Maguire**
as Devon Morehouse
The Spoils of Babylon





Outstanding Lead Actor In A Miniseries Or A Movie

For a performance in a miniseries or a movie. Emmy to performer. NOTE: VOTE FOR NO MORE THAN SIX achievements in this category that you have seen and feel are worthy of nomination. (More than six votes in this category will void all votes in this category.) Photos, color or black & white, were optional.

174

Dylan McDermott
as Duncan Carlise
Hostages



175

Neal McDonough
as Captain William Parker
Mob City



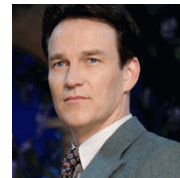
176

Jason Momoa
as Phillip Kopus
The Red Road



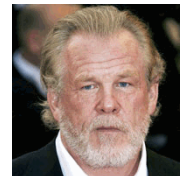
177

Stephen Moyer
as Captain Von Trapp
The Sound of Music Live!



178

Nick Nolte
as Bridges
The Trials of Cate McCall





Outstanding Lead Actor In A Miniseries Or A Movie

For a performance in a miniseries or a movie. Emmy to performer. NOTE: VOTE FOR NO MORE THAN SIX achievements in this category that you have seen and feel are worthy of nomination. (More than six votes in this category will void all votes in this category.) Photos, color or black & white, were optional.

179

Clarke Peters
as Albert Lambreaux
Treme



180

Wendell Pierce
as Antoine Batiste
Treme



181

Christopher Plummer
as Justice John Harlan II
Muhammad Ali's Greatest Fight



182

James Roday
as Shawn Spencer
Psych The Musical



183

Mark Ruffalo
as Ned Weeks
The Normal Heart





Outstanding Lead Actor In A Miniseries Or A Movie

For a performance in a miniseries or a movie. Emmy to performer. NOTE: VOTE FOR NO MORE THAN SIX achievements in this category that you have seen and feel are worthy of nomination. (More than six votes in this category will void all votes in this category.) Photos, color or black & white, were optional.

184 **Billy Bob Thornton**
as Lorne Malvo
Fargo



185 **Mike Vogel**
as Nick
In My Dreams (Hallmark Hall of Fame)



186 **Benjamin Walker**
as Kevin Connolly
Muhammad Ali's Greatest Fight



187 **Dominic West**
as Richard Burton
Burton And Taylor



188 **Ben Whishaw**
as King Richard II
The Hollow Crown (Great Performances)



End of Category



Outstanding Lead Actress In A Comedy Series

For a continuing performance in a comedy series. Emmy to performer. NOTE: VOTE FOR NO MORE THAN SIX achievements in this category that you have seen and feel are worthy of nomination. (More than six votes in this category will void all votes in this category.) Photos, color or black & white, were optional.

189

Malin Akerman
as Kate
Trophy Wife



190

Kirstie Alley
as Madison Banks
Kirstie



191

Beth Behrs
as Caroline Channing
2 Broke Girls



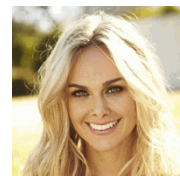
192

Rachel Bilson
as Dr. Zoe Hart
Hart of Dixie



193

Laura Bell Bundy
as Dr. Jordan Denby / Jessie
Anger Management





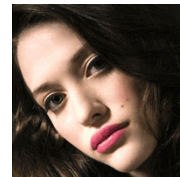
Outstanding Lead Actress In A Comedy Series

For a continuing performance in a comedy series. Emmy to performer. NOTE: VOTE FOR NO MORE THAN SIX achievements in this category that you have seen and feel are worthy of nomination. (More than six votes in this category will void all votes in this category.) Photos, color or black & white, were optional.

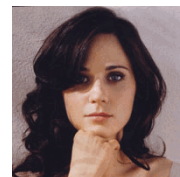
194 **Courteney Cox**
as Jules Cobb
Cougar Town



195 **Kat Dennings**
as Max
2 Broke Girls



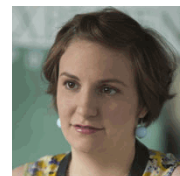
196 **Zooey Deschanel**
as Jess Day
New Girl



197 **Minnie Driver**
as Fiona
About A Boy



198 **Lena Dunham**
as Hannah Horvath
Girls





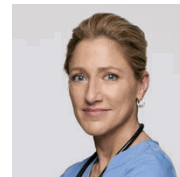
Outstanding Lead Actress In A Comedy Series

For a continuing performance in a comedy series. Emmy to performer. NOTE: VOTE FOR NO MORE THAN SIX achievements in this category that you have seen and feel are worthy of nomination. (More than six votes in this category will void all votes in this category.) Photos, color or black & white, were optional.

199 **Jenna Elfman**
as Joyce Fisher
Growing Up Fisher



200 **Edie Falco**
as Jackie Peyton
Nurse Jackie



201 **Anna Faris**
as Christy
Mom



202 **Edy Ganem**
as Valentina Diaz
Devious Maids



203 **Jami Gertz**
as Debbie Weaver
The Neighbors





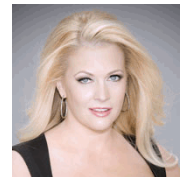
Outstanding Lead Actress In A Comedy Series

For a continuing performance in a comedy series. Emmy to performer. NOTE: VOTE FOR NO MORE THAN SIX achievements in this category that you have seen and feel are worthy of nomination. (More than six votes in this category will void all votes in this category.) Photos, color or black & white, were optional.

204 **Ilana Glazer**
as Ilana Wexler
Broad City



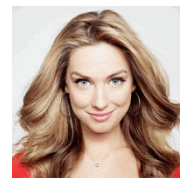
205 **Melissa Joan Hart**
as Mel Burke
Melissa & Joey



206 **Patricia Heaton**
as Frankie Heck
The Middle



207 **Briga Heelan**
as Jenny Miller
Ground Floor



208 **Abbi Jacobson**
as Abbi Abrams
Broad City





Outstanding Lead Actress In A Comedy Series

For a continuing performance in a comedy series. Emmy to performer. NOTE: VOTE FOR NO MORE THAN SIX achievements in this category that you have seen and feel are worthy of nomination. (More than six votes in this category will void all votes in this category.) Photos, color or black & white, were optional.

209

Kristen Johnston
as Holly Franklin
The Exes



210

Mindy Kaling
as Dr. Mindy Lahiri
The Mindy Project



211

Jane Levy
as Tessa Altman
Suburgatory



212

Julia Louis-Dreyfus
as Vice President Selina Meyer
Veep



213

Patrice Lovely
as Hattie Mae Love
Tyler Perry's Love Thy Neighbor

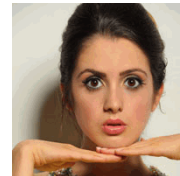




Outstanding Lead Actress In A Comedy Series

For a continuing performance in a comedy series. Emmy to performer. NOTE: VOTE FOR NO MORE THAN SIX achievements in this category that you have seen and feel are worthy of nomination. (More than six votes in this category will void all votes in this category.) Photos, color or black & white, were optional.

214 **Laura Marano**
as Ally Dawson
Austin & Ally



215 **Melissa McCarthy**
as Molly Flynn
Mike & Molly



216 **Wendi McLendon-Covey**
as Beverly Goldberg
The Goldbergs



217 **Laurie Metcalf**
as Dr. Jenna James
Getting On



218 **Lea Michele**
as Rachel Berry
Glee





Outstanding Lead Actress In A Comedy Series

For a continuing performance in a comedy series. Emmy to performer. NOTE: VOTE FOR NO MORE THAN SIX achievements in this category that you have seen and feel are worthy of nomination. (More than six votes in this category will void all votes in this category.) Photos, color or black & white, were optional.

219 **Emily Mortimer**
as Emily
Doll & Em



220 **Niecy Nash**
as Lolli Ballentine
The Soul Man



221 **Ana Ortiz**
as Marisol Suarez
Devious Maids



222 **Lennon Parham**
as Maggie Caruso
Playing House



223 **Martha Plimpton**
as Virginia Chance
Raising Hope





Outstanding Lead Actress In A Comedy Series

For a continuing performance in a comedy series. Emmy to performer. NOTE: VOTE FOR NO MORE THAN SIX achievements in this category that you have seen and feel are worthy of nomination. (More than six votes in this category will void all votes in this category.) Photos, color or black & white, were optional.

224 **Amy Poehler**
as Leslie Knope
Parks and Recreation



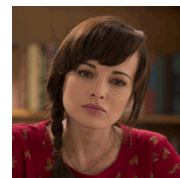
225 **Dania Ramirez**
as Rosie Falta
Devious Maids



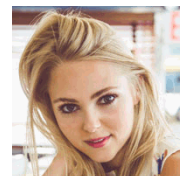
226 **Judy Reyes**
as Zoila Diaz
Devious Maids



227 **Ashley Rickards**
as Jenna Hamilton
Awkward.



228 **AnnaSophia Robb**
as Carrie Bradshaw
The Carrie Diaries



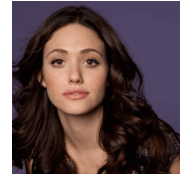


Outstanding Lead Actress In A Comedy Series

For a continuing performance in a comedy series. Emmy to performer. NOTE: VOTE FOR NO MORE THAN SIX achievements in this category that you have seen and feel are worthy of nomination. (More than six votes in this category will void all votes in this category.) Photos, color or black & white, were optional.

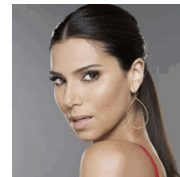
229

Emmy Rossum
as Fiona Gallagher
Shameless



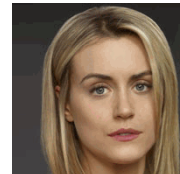
230

Roselyn Sanchez
as Carmen Luna
Devious Maids



231

Taylor Schilling
as Piper Chapman
Orange Is The New Black



232

Tasha Smith
as Angela Williams
Tyler Perry's For Better Or Worse



233

Jessica St. Clair
as Emma Crawford
Playing House





Outstanding Lead Actress In A Comedy Series

For a continuing performance in a comedy series. Emmy to performer. NOTE: VOTE FOR NO MORE THAN SIX achievements in this category that you have seen and feel are worthy of nomination. (More than six votes in this category will void all votes in this category.) Photos, color or black & white, were optional.

234

Nancy Travis
as Vanessa Baxter
Last Man Standing



235

Dolly Wells
as Dolly
Doll & Em



236

Suzanne Whang
as Divina
From HERE On OUT



End of Category



Outstanding Lead Actress In A Drama Series

For a continuing performance in a drama series. Emmy to performer. NOTE: VOTE FOR NO MORE THAN SIX achievements in this category that you have seen and feel are worthy of nomination. (More than six votes in this category will void all votes in this category.) Photos, color or black & white, were optional.

237

Sasha Alexander

as Dr. Maura Isles

Rizzoli & Isles

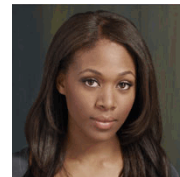


238

Nicole Beharie

as Lieutenant Abbie Mills

Sleepy Hollow

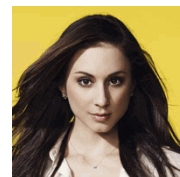


239

Troian Bellisario

as Spencer Hastings

Pretty Little Liars



240

Megan Boone

as Elizabeth Keen

The Blacklist



241

Connie Britton

as Rayna Jaymes

Nashville

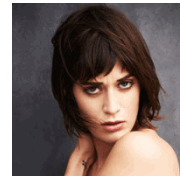




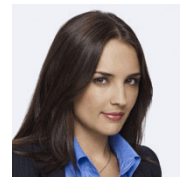
Outstanding Lead Actress In A Drama Series

For a continuing performance in a drama series. Emmy to performer. NOTE: VOTE FOR NO MORE THAN SIX achievements in this category that you have seen and feel are worthy of nomination. (More than six votes in this category will void all votes in this category.) Photos, color or black & white, were optional.

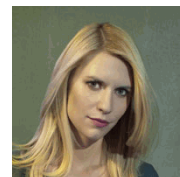
242 **Lizzy Caplan**
as Virginia Johnson
Masters of Sex



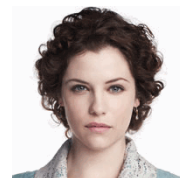
243 **Rachel Leigh Cook**
as Agent Kate Moretti
Perception



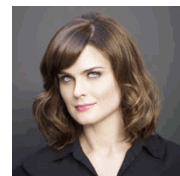
244 **Claire Danes**
as Carrie Mathison
Homeland



245 **Jessica De Gouw**
as Mina Murray, Ilona
Dracula



246 **Emily Deschanel**
as Dr. Temperance "Bones" Brennan
Bones

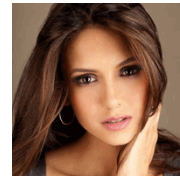




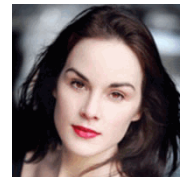
Outstanding Lead Actress In A Drama Series

For a continuing performance in a drama series. Emmy to performer. NOTE: VOTE FOR NO MORE THAN SIX achievements in this category that you have seen and feel are worthy of nomination. (More than six votes in this category will void all votes in this category.) Photos, color or black & white, were optional.

247 **Nina Dobrev**
as Elena Gilbert / Katherine Pierce / Amara
The Vampire Diaries



248 **Michelle Dockery**
as Lady Mary Crawley
Downton Abbey



249 **Mireille Enos**
as Sarah Linden
The Killing



250 **Vera Farmiga**
as Norma Bates
Bates Motel



251 **Jorja Fox**
as Sara Sidle
CSI: Crime Scene Investigation





Outstanding Lead Actress In A Drama Series

For a continuing performance in a drama series. Emmy to performer. NOTE: VOTE FOR NO MORE THAN SIX achievements in this category that you have seen and feel are worthy of nomination. (More than six votes in this category will void all votes in this category.) Photos, color or black & white, were optional.

252

Ginnifer Goodwin
as Snow White/Mary Margaret Blanchard
Once Upon A Time



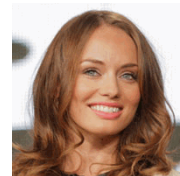
253

Linda Gray
as Sue Ellen Ewing
Dallas



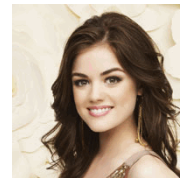
254

Laura Haddock
as Lucrezia Donati
Da Vinci's Demons



255

Lucy Hale
as Aria Montgomery
Pretty Little Liars



256

Mariska Hargitay
as Sergeant Olivia Benson
Law & Order: Special Victims Unit





Outstanding Lead Actress In A Drama Series

For a continuing performance in a drama series. Emmy to performer. NOTE: VOTE FOR NO MORE THAN SIX achievements in this category that you have seen and feel are worthy of nomination. (More than six votes in this category will void all votes in this category.) Photos, color or black & white, were optional.

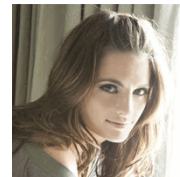
257

Angie Harmon
as Det. Jane Rizzoli
Rizzoli & Isles



258

Stana Katic
as Kate Beckett
Castle



259

Diane Kruger
as Sonya Cross
The Bridge



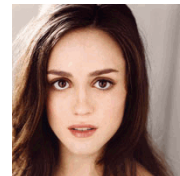
260

Olga Kurlenko
as Vera Evans
Magic City



261

Heather Lind
as Anna Strong
Turn



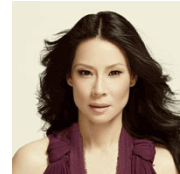


Outstanding Lead Actress In A Drama Series

For a continuing performance in a drama series. Emmy to performer. NOTE: VOTE FOR NO MORE THAN SIX achievements in this category that you have seen and feel are worthy of nomination. (More than six votes in this category will void all votes in this category.) Photos, color or black & white, were optional.

262

Lucy Liu
as Dr. Joan Watson
Elementary



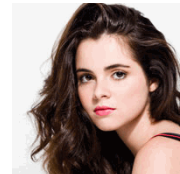
263

Andie MacDowell
as Olivia Lockhart
Debbie Macomber's Cedar Cove



264

Vanessa Marano
as Bay Kennish
Switched At Birth



265

Julianna Margulies
as Alicia Florrick
The Good Wife



266

Tatiana Maslany
as Sarah, Beth, Cosima, Rachel (and more)
Orphan Black





Outstanding Lead Actress In A Drama Series

For a continuing performance in a drama series. Emmy to performer. NOTE: VOTE FOR NO MORE THAN SIX achievements in this category that you have seen and feel are worthy of nomination. (More than six votes in this category will void all votes in this category.) Photos, color or black & white, were optional.

267

Mary McDonnell
as Capt. Sharon Raydor
Major Crimes



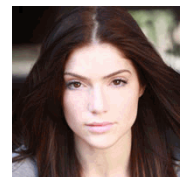
268

Elizabeth McGovern
as Cora, Countess of Grantham
Downton Abbey



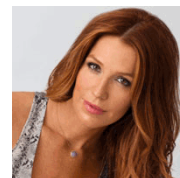
269

Janet Montgomery
as Mary Sibley
Salem



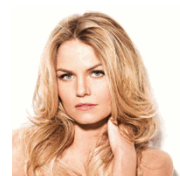
270

Poppy Montgomery
as Carrie Wells
Unforgettable



271

Jennifer Morrison
as Emma Swan
Once Upon A Time





Outstanding Lead Actress In A Drama Series

For a continuing performance in a drama series. Emmy to performer. NOTE: VOTE FOR NO MORE THAN SIX achievements in this category that you have seen and feel are worthy of nomination. (More than six votes in this category will void all votes in this category.) Photos, color or black & white, were optional.

272

Elisabeth Moss
as Peggy Olson
Mad Men



273

Rachel Nichols
as Kiera Cameron
Continuum



274

Frances O'Connor
as Rose Selfridge
Mr Selfridge (Masterpiece)



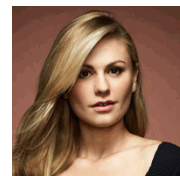
275

Julia Ormond
as Joanna Beauchamp
Witches Of East End



276

Anna Paquin
as Sookie Stackhouse
True Blood



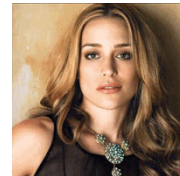


Outstanding Lead Actress In A Drama Series

For a continuing performance in a drama series. Emmy to performer. NOTE: VOTE FOR NO MORE THAN SIX achievements in this category that you have seen and feel are worthy of nomination. (More than six votes in this category will void all votes in this category.) Photos, color or black & white, were optional.

277

Piper Perabo
as Annie Walker
Covert Affairs



278

Teri Polo
as Stef Adams Foster
The Fosters



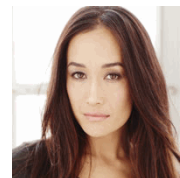
279

Ellen Pompeo
as Meredith Grey
Grey's Anatomy



280

Maggie Q
as Nikita
Nikita



281

Jessica Raine
as Jenny Lee
Call The Midwife





Outstanding Lead Actress In A Drama Series

For a continuing performance in a drama series. Emmy to performer. NOTE: VOTE FOR NO MORE THAN SIX achievements in this category that you have seen and feel are worthy of nomination. (More than six votes in this category will void all votes in this category.) Photos, color or black & white, were optional.

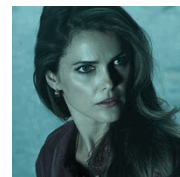
282 **Cierra Ramirez**
as Mariana
The Fosters



283 **Kelly Reilly**
as Catherine Black
Black Box



284 **Keri Russell**
as Elizabeth Jennings
The Americans



285 **Katey Sagal**
as Gemma Teller Morrow
Sons Of Anarchy



286 **Sherri Saum**
as Lena Foster
The Fosters





Outstanding Lead Actress In A Drama Series

For a continuing performance in a drama series. Emmy to performer. NOTE: VOTE FOR NO MORE THAN SIX achievements in this category that you have seen and feel are worthy of nomination. (More than six votes in this category will void all votes in this category.) Photos, color or black & white, were optional.

287

Chloë Sevigny
as Catherine Jenson
Those Who Kill



288

Tracy Spiridakos
as Charlie Matheson
Revolution



289

Gabrielle Union
as Mary Jane Paul
Being Mary Jane



290

Emily VanCamp
as Emily Thorne / Amanda Clarke
Revenge



291

Kerry Washington
as Olivia Pope
Scandal



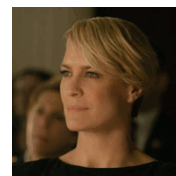


Outstanding Lead Actress In A Drama Series

For a continuing performance in a drama series. Emmy to performer. NOTE: VOTE FOR NO MORE THAN SIX achievements in this category that you have seen and feel are worthy of nomination. (More than six votes in this category will void all votes in this category.) Photos, color or black & white, were optional.

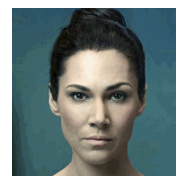
292

Robin Wright
as Claire Underwood
House of Cards



293

Kyra Zagorsky
as Dr. Julia Walker
Helix



End of Category



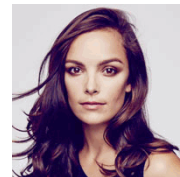
Outstanding Lead Actress In A Miniseries Or A Movie

For a performance in a miniseries or a movie. Emmy to performer. NOTE: VOTE FOR NO MORE THAN SIX achievements in this category that you have seen and feel are worthy of nomination. (More than six votes in this category will void all votes in this category.) Photos, color or black & white, were optional.

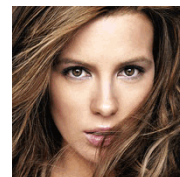
294 **Khandi Alexander**
as LaDonna Batiste-Williams
Treme



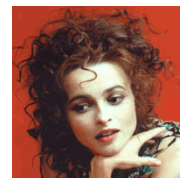
295 **Jodi Balfour**
as Gladys Witham
Bomb Girls: Facing the Enemy



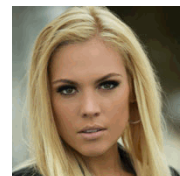
296 **Kate Beckinsale**
as Cate McCall
The Trials of Cate McCall



297 **Helena Bonham Carter**
as Elizabeth Taylor
Burton And Taylor



298 **Agnes Bruckner**
as Anna Nicole Smith
Anna Nicole





Outstanding Lead Actress In A Miniseries Or A Movie

For a performance in a miniseries or a movie. Emmy to performer. NOTE: VOTE FOR NO MORE THAN SIX achievements in this category that you have seen and feel are worthy of nomination. (More than six votes in this category will void all votes in this category.) Photos, color or black & white, were optional.

299

Toni Collette
as Dr. Ellen Sanders
Hostages



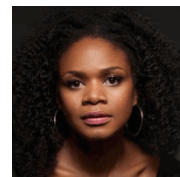
300

Minnie Driver
as Maggie Royal
Return To Zero



301

Kimberly Elise
as Angela Logan
Apple Mortgage Cake



302

Rebecca Ferguson
as Elizabeth Woodville (Queen Elizabeth)
The White Queen



303

Gina Gershon
as Donatella Versace
House Of Versace





Outstanding Lead Actress In A Miniseries Or A Movie

For a performance in a miniseries or a movie. Emmy to performer. NOTE: VOTE FOR NO MORE THAN SIX achievements in this category that you have seen and feel are worthy of nomination. (More than six votes in this category will void all votes in this category.) Photos, color or black & white, were optional.

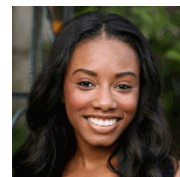
304 **Whoopi Goldberg**
as Viola
A Day Late And A Dollar Short



305 **Holliday Grainger**
as Bonnie Parker
Bonnie & Clyde



306 **Imani Hakim**
as Gabby Douglas (14-16 yrs.)
The Gabby Douglas Story



307 **Jessica Lange**
as Fiona Goode
American Horror Story: Coven



308 **Katharine McPhee**
as Natalie
In My Dreams (Hallmark Hall of Fame)

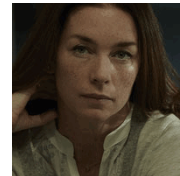




Outstanding Lead Actress In A Miniseries Or A Movie

For a performance in a miniseries or a movie. Emmy to performer. NOTE: VOTE FOR NO MORE THAN SIX achievements in this category that you have seen and feel are worthy of nomination. (More than six votes in this category will void all votes in this category.) Photos, color or black & white, were optional.

309 **Julianne Nicholson**
as Jean Jensen
The Red Road



310 **Mary-Louise Parker**
as Suzy
Christmas In Conway (Hallmark Hall of Fame)



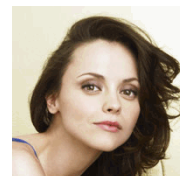
311 **Sarah Paulson**
as Cordelia Goode Foxx
American Horror Story: Coven



312 **Tania Raymonde**
as Jodi Arias
Jodi Arias: Dirty Little Secret



313 **Christina Ricci**
as Lizzie Borden
Lizzie Borden Took An Ax





Outstanding Lead Actress In A Miniseries Or A Movie

For a performance in a miniseries or a movie. Emmy to performer. NOTE: VOTE FOR NO MORE THAN SIX achievements in this category that you have seen and feel are worthy of nomination. (More than six votes in this category will void all votes in this category.) Photos, color or black & white, were optional.

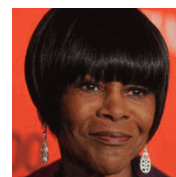
314 **Zoe Saldana**
as Rosemary Woodhouse
Rosemary's Baby



315 **Kiernan Shipka**
as Cathy
Flowers In The Attic



316 **Cicely Tyson**
as Carrie Watts
The Trip To Bountiful



317 **Carrie Underwood**
as Maria Von Trapp
The Sound of Music Live!



318 **Kristen Wiig**
as Cynthia Morehouse
The Spoils of Babylon



End of Category



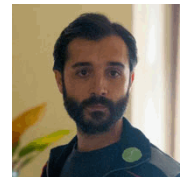
Outstanding Supporting Actor In A Comedy Series

For a continuing performance in a comedy series. Emmy to performer. NOTE: VOTE FOR NO MORE THAN SIX achievements in this category that you have seen and feel are worthy of nomination. (More than six votes in this category will void all votes in this category.) Photos, color or black & white, were optional.

319 **Ahmed Ahmed**
as Ahmed
Sullivan & Son



320 **Frankie J. Alvarez**
as Agustin
Looking



321 **Aziz Ansari**
as Tom Haverford
Parks And Recreation



322 **Fred Armisen**
as Various characters
Portlandia



323 **Scott Aukerman**
as Himself
Comedy Bang! Bang!





Outstanding Supporting Actor In A Comedy Series

For a continuing performance in a comedy series. Emmy to performer. NOTE: VOTE FOR NO MORE THAN SIX achievements in this category that you have seen and feel are worthy of nomination. (More than six votes in this category will void all votes in this category.) Photos, color or black & white, were optional.

324 **Eli Baker**
as Henry Fisher
Growing Up Fisher



325 **Dan Bakkedahl**
as Steve
Legit



326 **Ike Barinholtz**
as Morgan Tookers
The Mindy Project



327 **Murray Bartlett**
as Dom
Looking



328 **Ed Begley, Jr.**
as Al Chadwick
Family Tree

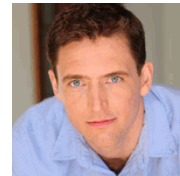




Outstanding Supporting Actor In A Comedy Series

For a continuing performance in a comedy series. Emmy to performer. NOTE: VOTE FOR NO MORE THAN SIX achievements in this category that you have seen and feel are worthy of nomination. (More than six votes in this category will void all votes in this category.) Photos, color or black & white, were optional.

329 Owen Benjamin
as Owen
Sullivan & Son



330 Beck Bennett
as Various characters
Saturday Night Live



331 Tom Bennett
as Pete Stupples
Family Tree



332 Jason Biggs
as Larry Bloom
Orange Is The New Black



333 Kevin Bigley
as Brian
Sirens





Outstanding Supporting Actor In A Comedy Series

For a continuing performance in a comedy series. Emmy to performer. NOTE: VOTE FOR NO MORE THAN SIX achievements in this category that you have seen and feel are worthy of nomination. (More than six votes in this category will void all votes in this category.) Photos, color or black & white, were optional.

334 **Gregg Binkley**
as Barney
Raising Hope



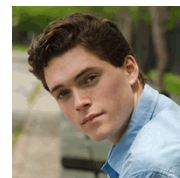
335 **Andre Braugher**
as Captain Ray Holt
Brooklyn Nine-Nine



336 **Beau Bridges**
as Tom Miller
The Millers



337 **Connor Buckley**
as Frankie Dunlevy
Surviving Jack



338 **Hannibal Buress**
as Lincoln Rice
Broad City





Outstanding Supporting Actor In A Comedy Series

For a continuing performance in a comedy series. Emmy to performer. NOTE: VOTE FOR NO MORE THAN SIX achievements in this category that you have seen and feel are worthy of nomination. (More than six votes in this category will void all votes in this category.) Photos, color or black & white, were optional.

339

Ty Burrell
as Phil Dunphy
Modern Family



340

Adam Busch
as Neal
Men at Work



341

Dan Byrd
as Travis Cobb
Cougar Town



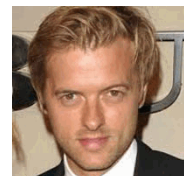
342

Jonathan Cake
as Buddy (the Producer)
Doll & Em



343

Adam Campbell
as Ron
Mixology





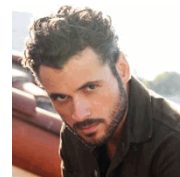
Outstanding Supporting Actor In A Comedy Series

For a continuing performance in a comedy series. Emmy to performer. NOTE: VOTE FOR NO MORE THAN SIX achievements in this category that you have seen and feel are worthy of nomination. (More than six votes in this category will void all votes in this category.) Photos, color or black & white, were optional.

344 **Nick Cannon**
as Himself
Real Husbands Of Hollywood



345 **Adan Canto**
as Dominic
Mixology



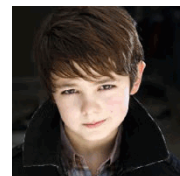
346 **Michael Cassidy**
as Tyler
Men at Work



347 **Raúl Castillo**
as Richie
Looking



348 **Max Charles**
as Max Weaver
The Neighbors





Outstanding Supporting Actor In A Comedy Series

For a continuing performance in a comedy series. Emmy to performer. NOTE: VOTE FOR NO MORE THAN SIX achievements in this category that you have seen and feel are worthy of nomination. (More than six votes in this category will void all votes in this category.) Photos, color or black & white, were optional.

349

Jonathan Chase

as Sam Parker

Tyler Perry's Love Thy Neighbor



350

Bob Clendenin

as Vernon Shank

QuickDraw

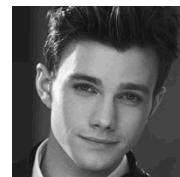


351

Chris Colfer

as Kurt Hummel

Glee

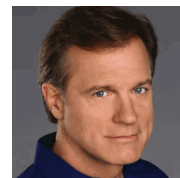


352

Stephen Collins

as Philippe Delatour

Devious Maids



353

Mark Consuelos

as Senator Andy Guzman

Alpha House





Outstanding Supporting Actor In A Comedy Series

For a continuing performance in a comedy series. Emmy to performer. NOTE: VOTE FOR NO MORE THAN SIX achievements in this category that you have seen and feel are worthy of nomination. (More than six votes in this category will void all votes in this category.) Photos, color or black & white, were optional.

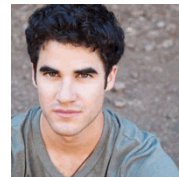
354

Terry Crews
as Sergeant Terry Jeffords
Brooklyn Nine-Nine



355

Darren Criss
as Blaine
Glee



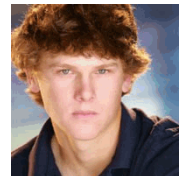
356

Ethan Cutkosky
as Carl Gallagher
Shameless



357

Spencer Daniels
as Luke
Mom



358

Charlie Day
as Charlie Kelly
It's Always Sunny In Philadelphia





Outstanding Supporting Actor In A Comedy Series

For a continuing performance in a comedy series. Emmy to performer. NOTE: VOTE FOR NO MORE THAN SIX achievements in this category that you have seen and feel are worthy of nomination. (More than six votes in this category will void all votes in this category.) Photos, color or black & white, were optional.

359

Danny DeVito

as Frank Reynolds

It's Always Sunny In Philadelphia



360

Chris Diamantopoulos

as Castor Sotto

Episodes

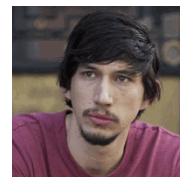


361

Adam Driver

as Adam Sackler

Girls



362

Kevin Dunn

as Ben Cafferty

Veep



363

Mark Duplass

as Pete Eckhart

The League





Outstanding Supporting Actor In A Comedy Series

For a continuing performance in a comedy series. Emmy to performer. NOTE: VOTE FOR NO MORE THAN SIX achievements in this category that you have seen and feel are worthy of nomination. (More than six votes in this category will void all votes in this category.) Photos, color or black & white, were optional.

364 **David Earl**
as Kev
Derek



365 **James Earl**
as Derrick Dupree
Ground Floor



366 **Hector Elizondo**
as Ed Alzate
Last Man Standing



367 **Peter Facinelli**
as Dr. Fitch Cooper
Nurse Jackie



368 **Jesse Tyler Ferguson**
as Mitchell Pritchett
Modern Family





Outstanding Supporting Actor In A Comedy Series

For a continuing performance in a comedy series. Emmy to performer. NOTE: VOTE FOR NO MORE THAN SIX achievements in this category that you have seen and feel are worthy of nomination. (More than six votes in this category will void all votes in this category.) Photos, color or black & white, were optional.

369 **Adam Ferrara**
as Frank Verelli
Nurse Jackie



370 **Noel Fisher**
as Mickey Milkovich
Shameless



371 **Craig Frank**
as Cal
Mixology



372 **Dominic Fumusa**
as Kevin Peyton
Nurse Jackie



373 **Jason Gann**
as Wilfred
Wilfred





Outstanding Supporting Actor In A Comedy Series

For a continuing performance in a comedy series. Emmy to performer. NOTE: VOTE FOR NO MORE THAN SIX achievements in this category that you have seen and feel are worthy of nomination. (More than six votes in this category will void all votes in this category.) Photos, color or black & white, were optional.

374

Troy Gentile
as Barry Goldberg
The Goldbergs



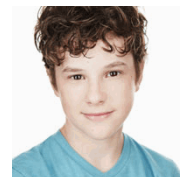
375

Sean Giambrone
as Adam Goldberg
The Goldbergs



376

Nolan Gould
as Luke Dunphy
Modern Family



377

Max Greenfield
as Schmidt
New Girl



378

Rene Gube
as Mike "Threepeat" Wen
Ground Floor





Outstanding Supporting Actor In A Comedy Series

For a continuing performance in a comedy series. Emmy to performer. NOTE: VOTE FOR NO MORE THAN SIX achievements in this category that you have seen and feel are worthy of nomination. (More than six votes in this category will void all votes in this category.) Photos, color or black & white, were optional.

379

Christopher Guest

as Dave Chadwick

Family Tree



380

Tony Hale

as Gary Walsh

Veep



381

Evan Handler

as Charlie Runkle

Californication

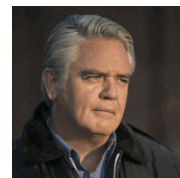


382

Michael J. Harney

as Sam Healy

Orange Is The New Black

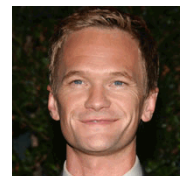


383

Neil Patrick Harris

as Barney Stinson

How I Met Your Mother





Outstanding Supporting Actor In A Comedy Series

For a continuing performance in a comedy series. Emmy to performer. NOTE: VOTE FOR NO MORE THAN SIX achievements in this category that you have seen and feel are worthy of nomination. (More than six votes in this category will void all votes in this category.) Photos, color or black & white, were optional.

384

Simon Helberg
as Howard Wolowitz
The Big Bang Theory



385

Ed Helms
as Cesar Pequeno
Tiny Commando



386

Aaron Himelstein
as Mike (the Director)
Doll & Em



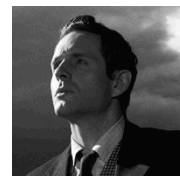
387

Josh Hopkins
as Grayson Ellis
Cougar Town



388

Glenn Howerton
as Dennis Reynolds
It's Always Sunny In Philadelphia

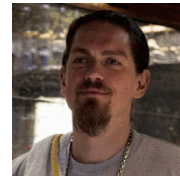




Outstanding Supporting Actor In A Comedy Series

For a continuing performance in a comedy series. Emmy to performer. NOTE: VOTE FOR NO MORE THAN SIX achievements in this category that you have seen and feel are worthy of nomination. (More than six votes in this category will void all votes in this category.) Photos, color or black & white, were optional.

389 **Steve Howey**
as Kevin Ball
Shameless



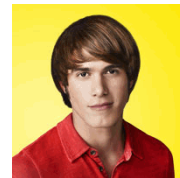
390 **Tom Irwin**
as Adrian Powell
Devious Maids



391 **Brandon T. Jackson**
as Rufus "Roofie" Jones
Deadbeat



392 **Blake Jenner**
as Ryder Lynn
Glee



393 **Ken Jeong**
as Señor Chang
Community





Outstanding Supporting Actor In A Comedy Series

For a continuing performance in a comedy series. Emmy to performer. NOTE: VOTE FOR NO MORE THAN SIX achievements in this category that you have seen and feel are worthy of nomination. (More than six votes in this category will void all votes in this category.) Photos, color or black & white, were optional.

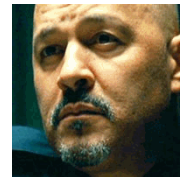
394

Tim Jo
as Reggie Jackson
The Neighbors



395

Clark Johnson
as Senator Robert Bettencourt
Alpha House



396

Wesley Jonathan
as Stamps Ballentine
The Soul Man



397

Colin Jost
as Various characters
Saturday Night Live



398

Alex Karpovsky
as Ray Ploshansky
Girls





Outstanding Supporting Actor In A Comedy Series

For a continuing performance in a comedy series. Emmy to performer. NOTE: VOTE FOR NO MORE THAN SIX achievements in this category that you have seen and feel are worthy of nomination. (More than six votes in this category will void all votes in this category.) Photos, color or black & white, were optional.

399

Echo Kellum

as Hunter

Sean Saves The World



400

Keegan-Michael Key

as Various characters

Key & Peele



401

Taran Killam

as Various characters

Saturday Night Live



402

Boris Kodjoe

as Himself

Real Husbands Of Hollywood



403

Nick Kroll

as Ruxin

The League





Outstanding Supporting Actor In A Comedy Series

For a continuing performance in a comedy series. Emmy to performer. NOTE: VOTE FOR NO MORE THAN SIX achievements in this category that you have seen and feel are worthy of nomination. (More than six votes in this category will void all votes in this category.) Photos, color or black & white, were optional.

404 **Jon Lajoie**
as Taco
The League



405 **Dan Lauria**
as Jack Sullivan
Sullivan & Son



406 **Josh Lawson**
as Doug Guggenheim
House of Lies



407 **Blake Lee**
as Tom
Mixology



408 **Ryan Lee**
as Warren
Trophy Wife





Outstanding Supporting Actor In A Comedy Series

For a continuing performance in a comedy series. Emmy to performer. NOTE: VOTE FOR NO MORE THAN SIX achievements in this category that you have seen and feel are worthy of nomination. (More than six votes in this category will void all votes in this category.) Photos, color or black & white, were optional.

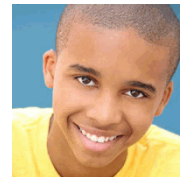
409

Thomas Lennon
as Max
Sean Saves The World



410

Donis Leonard, Jr.
as Roscoe Kaan
House of Lies



411

James Lesure
as Gibbs
Men at Work



412

Lance Lim
as Runyen
Growing Up Fisher



413

Steve Little
as Stevie Janowski
Eastbound & Down





Outstanding Supporting Actor In A Comedy Series

For a continuing performance in a comedy series. Emmy to performer. NOTE: VOTE FOR NO MORE THAN SIX achievements in this category that you have seen and feel are worthy of nomination. (More than six votes in this category will void all votes in this category.) Photos, color or black & white, were optional.

414

Joe Lo Truglio
as Detective Charles Boyle
Brooklyn Nine-Nine



415

Al Madrigal
as Andy
About A Boy



416

Matt Malloy
as Senator Louis Laffer, Jr.
Alpha House



417

Stephen Mangan
as Sean Lincoln
Episodes



418

Ken Marino
as Guy Young
Eastbound & Down





Outstanding Supporting Actor In A Comedy Series

For a continuing performance in a comedy series. Emmy to performer. NOTE: VOTE FOR NO MORE THAN SIX achievements in this category that you have seen and feel are worthy of nomination. (More than six votes in this category will void all votes in this category.) Photos, color or black & white, were optional.

419 **Duane Martin**
as Himself
Real Husbands Of Hollywood



420 **Tim Matheson**
as Dr. Brick Breeland
Hart Of Dixie



421 **Jake McDorman**
as Mike Pratt
Shameless



422 **Rob McElhenney**
as Mac
It's Always Sunny In Philadelphia



423 **John C. McGinley**
as Remington Stewart Mansfield
Ground Floor





Outstanding Supporting Actor In A Comedy Series

For a continuing performance in a comedy series. Emmy to performer. NOTE: VOTE FOR NO MORE THAN SIX achievements in this category that you have seen and feel are worthy of nomination. (More than six votes in this category will void all votes in this category.) Photos, color or black & white, were optional.

424 **Kevin McHale**
as Artie Abrams
Glee



425 **Michael McKean**
as Keith Chadwick
Family Tree



426 **Seth Meyers**
as Himself
Saturday Night Live



427 **John Milhiser**
as Various characters
Saturday Night Live



428 **T.J. Miller**
as Erlich
Silicon Valley

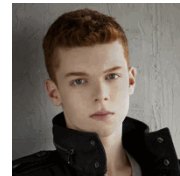




Outstanding Supporting Actor In A Comedy Series

For a continuing performance in a comedy series. Emmy to performer. NOTE: VOTE FOR NO MORE THAN SIX achievements in this category that you have seen and feel are worthy of nomination. (More than six votes in this category will void all votes in this category.) Photos, color or black & white, were optional.

429 **Cameron Monaghan**
as Ian Gallagher
Shameless



430 **Kyle Mooney**
as Various characters
Saturday Night Live



431 **Garrett Morris**
as Earl
2 Broke Girls



432 **Lamorne Morris**
as Winston
New Girl



433 **Tahj Mowry**
as Tucker Dobbs
Baby Daddy





Outstanding Supporting Actor In A Comedy Series

For a continuing performance in a comedy series. Emmy to performer. NOTE: VOTE FOR NO MORE THAN SIX achievements in this category that you have seen and feel are worthy of nomination. (More than six votes in this category will void all votes in this category.) Photos, color or black & white, were optional.

434 **Matthew Moy**
as Han Lee
2 Broke Girls



435 **Bobby Moynihan**
as Various characters
Saturday Night Live



436 **Brian Doyle Murray**
as Hank
Sullivan & Son



437 **Louis Mustillo**
as Vince Moranto
Mike & Molly



438 **Kumail Nanjiani**
as Dinesh
Silicon Valley



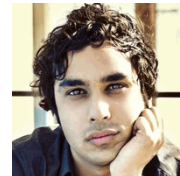


Outstanding Supporting Actor In A Comedy Series

For a continuing performance in a comedy series. Emmy to performer. NOTE: VOTE FOR NO MORE THAN SIX achievements in this category that you have seen and feel are worthy of nomination. (More than six votes in this category will void all votes in this category.) Photos, color or black & white, were optional.

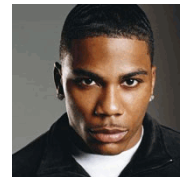
439

Kunal Nayyar
as Raj Koothrappali
The Big Bang Theory



440

Nelly
as Himself
Real Husbands Of Hollywood



441

Nyambi Nyambi
as Samuel
Mike & Molly



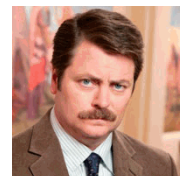
442

Mike O'Brien
as Various characters
Saturday Night Live



443

Nick Offerman
as Ron Swanson
Parks And Recreation





Outstanding Supporting Actor In A Comedy Series

For a continuing performance in a comedy series. Emmy to performer. NOTE: VOTE FOR NO MORE THAN SIX achievements in this category that you have seen and feel are worthy of nomination. (More than six votes in this category will void all votes in this category.) Photos, color or black & white, were optional.

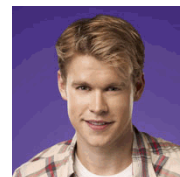
444 **Jim O'Heir**
as Jerry Gergich aka Larry Gengurch
Parks And Recreation



445 **Ed O'Neill**
as Jay Pritchett
Modern Family



446 **Chord Overstreet**
as Sam Evans
Glee



447 **Adam Pally**
as Dr. Peter Prentice
The Mindy Project



448 **John Pankow**
as Merc Lapidus
Episodes

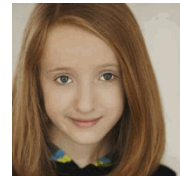




Outstanding Supporting Actor In A Comedy Series

For a continuing performance in a comedy series. Emmy to performer. NOTE: VOTE FOR NO MORE THAN SIX achievements in this category that you have seen and feel are worthy of nomination. (More than six votes in this category will void all votes in this category.) Photos, color or black & white, were optional.

449 **Ian Patrick**
as Dick Butkus
The Neighbors



450 **Jordan Peele**
as Various characters
Key & Peele



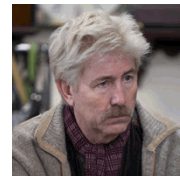
451 **Eric Petersen**
as Arlo Barth
Kirstie



452 **Jay Pharoah**
as Various characters
Saturday Night Live



453 **Jim Piddock**
as Glenn Pfister
Family Tree





Outstanding Supporting Actor In A Comedy Series

For a continuing performance in a comedy series. Emmy to performer. NOTE: VOTE FOR NO MORE THAN SIX achievements in this category that you have seen and feel are worthy of nomination. (More than six votes in this category will void all votes in this category.) Photos, color or black & white, were optional.

454 **Wendell Pierce**
as Harris Green
The Michael J. Fox Show



455 **Karl Pilkington**
as Dougie
Derek



456 **Chris Pratt**
as Andy Dwyer
Parks And Recreation



457 **Danny Pudi**
as Abed Nadir
Community



458 **DJ Qualls**
as Billy Nugent
Legit





Outstanding Supporting Actor In A Comedy Series

For a continuing performance in a comedy series. Emmy to performer. NOTE: VOTE FOR NO MORE THAN SIX achievements in this category that you have seen and feel are worthy of nomination. (More than six votes in this category will void all votes in this category.) Photos, color or black & white, were optional.

459 **Stephen Rannazzisi**
as Kevin
The League



460 **Jim Rash**
as Dean Pelton
Community



461 **Michael Richards**
as Frank Baxter
Kirstie



462 **Mel Rodriguez**
as Patsy De La Serda
Getting On



463 **Rico Rodriguez**
as Manny
Modern Family





Outstanding Supporting Actor In A Comedy Series

For a continuing performance in a comedy series. Emmy to performer. NOTE: VOTE FOR NO MORE THAN SIX achievements in this category that you have seen and feel are worthy of nomination. (More than six votes in this category will void all votes in this category.) Photos, color or black & white, were optional.

464 **Andrew Santino**
as Bruce
Mixology



465 **Paul Scheer**
as Andre
The League



466 **Paul Schulze**
as Eddie Walzer
Nurse Jackie



467 **Ben Schwartz**
as Clyde Oberholt
House of Lies



468 **Reid Scott**
as Dan Egan
Veep





Outstanding Supporting Actor In A Comedy Series

For a continuing performance in a comedy series. Emmy to performer. NOTE: VOTE FOR NO MORE THAN SIX achievements in this category that you have seen and feel are worthy of nomination. (More than six votes in this category will void all votes in this category.) Photos, color or black & white, were optional.

469

Rory Scovel

as Mark "Harvard" Shrake
Ground Floor



470

George Segal

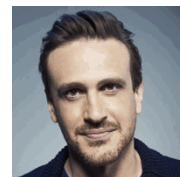
as Albert "Pops" Goldberg
The Goldbergs



471

Jason Segel

as Marshall Eriksen
How I Met Your Mother



472

Atticus Shaffer

as Brick Heck
The Middle



473

Grant Show

as Spence Westmore
Devious Maids





Outstanding Supporting Actor In A Comedy Series

For a continuing performance in a comedy series. Emmy to performer. NOTE: VOTE FOR NO MORE THAN SIX achievements in this category that you have seen and feel are worthy of nomination. (More than six votes in this category will void all votes in this category.) Photos, color or black & white, were optional.

474 **Timothy C. Simons**
as Jonah
Veep



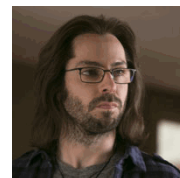
475 **JB Smoove**
as Ray
The Millers



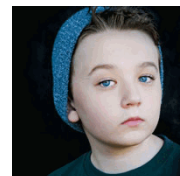
476 **JB Smoove**
as Himself
Real Husbands Of Hollywood



477 **Martin Starr**
as Gilfoyle
Silicon Valley



478 **Benjamin Stockham**
as Marcus
About A Boy





Outstanding Supporting Actor In A Comedy Series

For a continuing performance in a comedy series. Emmy to performer. NOTE: VOTE FOR NO MORE THAN SIX achievements in this category that you have seen and feel are worthy of nomination. (More than six votes in this category will void all votes in this category.) Photos, color or black & white, were optional.

479

Eric Stonestreet
as Cameron Tucker
Modern Family



480

Simon Templeman
as Larry Bird
The Neighbors



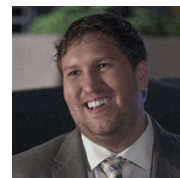
481

Kenan Thompson
as Various characters
Saturday Night Live



482

Nate Torrence
as Wade
Hello Ladies



483

Albert Tsai
as Bert Harrison
Trophy Wife





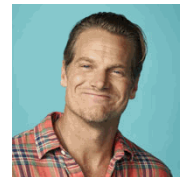
Outstanding Supporting Actor In A Comedy Series

For a continuing performance in a comedy series. Emmy to performer. NOTE: VOTE FOR NO MORE THAN SIX achievements in this category that you have seen and feel are worthy of nomination. (More than six votes in this category will void all votes in this category.) Photos, color or black & white, were optional.

484 **Glynn Turman**
as Jeremiah Kaan
House of Lies



485 **Brian Van Holt**
as Bobby Cobb
Cougar Town



486 **Stephen Wallem**
as Thor
Nurse Jackie



487 **Matt Walsh**
as Mike McLintock
Veep



488 **Reggie Watts**
as Himself
Comedy Bang! Bang!





Outstanding Supporting Actor In A Comedy Series

For a continuing performance in a comedy series. Emmy to performer. NOTE: VOTE FOR NO MORE THAN SIX achievements in this category that you have seen and feel are worthy of nomination. (More than six votes in this category will void all votes in this category.) Photos, color or black & white, were optional.

489

Ed Weeks
as Dr. Jeremy Reed
The Mindy Project



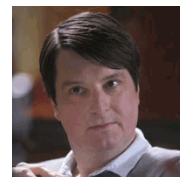
490

Kevin Weisman
as Kives
Hello Ladies



491

Christopher Evan Welch
as Peter
Silicon Valley



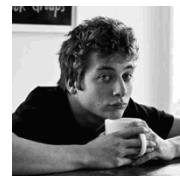
492

Brooks Wheelan
as Various characters
Saturday Night Live



493

Jeremy Allen White
as Lip Gallagher
Shameless





Outstanding Supporting Actor In A Comedy Series

For a continuing performance in a comedy series. Emmy to performer. NOTE: VOTE FOR NO MORE THAN SIX achievements in this category that you have seen and feel are worthy of nomination. (More than six votes in this category will void all votes in this category.) Photos, color or black & white, were optional.

494 **Michael Jai White**
as Marcus Williams
Tyler Perry's For Better Or Worse



495 **Fred Willard**
as Mike Morton
Family Tree



496 **Palmer Williams, Jr.**
as Floyd Stanley Jackson
Tyler Perry's Love Thy Neighbor



497 **Reno Wilson**
as Carl McMillan
Mike & Molly



498 **James Wolk**
as Zach Cropper
The Crazy Ones

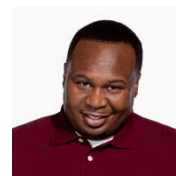




Outstanding Supporting Actor In A Comedy Series

For a continuing performance in a comedy series. Emmy to performer. NOTE: VOTE FOR NO MORE THAN SIX achievements in this category that you have seen and feel are worthy of nomination. (More than six votes in this category will void all votes in this category.) Photos, color or black & white, were optional.

499 **Roy Wood, Jr.**
as Roy
Sullivan & Son



500 **Zach Woods**
as Jared
Silicon Valley



501 **Parker Young**
as Randy Hill
Enlisted



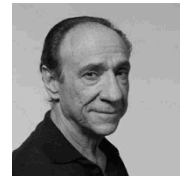
End of Category



Outstanding Supporting Actor In A Drama Series

For a continuing performance in a drama series. Emmy to performer. NOTE: VOTE FOR NO MORE THAN SIX achievements in this category that you have seen and feel are worthy of nomination. (More than six votes in this category will void all votes in this category.) Photos, color or black & white, were optional.

502 **F. Murray Abraham**
as Dar Adal
Homeland



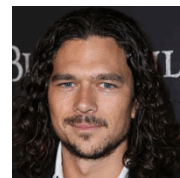
503 **Nonso Anozie**
as R.M. Renfield
Dracula



504 **Sebastian Arcelus**
as Lucas Goodwin
House of Cards



505 **Luke Arnold**
as John Silver
Black Sails



506 **Shawn Ashmore**
as Mike Weston
The Following





Outstanding Supporting Actor In A Drama Series

For a continuing performance in a drama series. Emmy to performer. NOTE: VOTE FOR NO MORE THAN SIX achievements in this category that you have seen and feel are worthy of nomination. (More than six votes in this category will void all votes in this category.) Photos, color or black & white, were optional.

507

Devon Bagby
as Conor Donovan
Ray Donovan



508

G.W. Bailey
as Lt. Provenza
Major Crimes



509

Charlie Barnett
as Peter Mills
Chicago Fire



510

Adam Bartley
as The Ferg
Longmire



511

Austin Basis
as J.T. Forbes
Beauty And The Beast





Outstanding Supporting Actor In A Drama Series

For a continuing performance in a drama series. Emmy to performer. NOTE: VOTE FOR NO MORE THAN SIX achievements in this category that you have seen and feel are worthy of nomination. (More than six votes in this category will void all votes in this category.) Photos, color or black & white, were optional.

512

Chris Bauer
as Andy Bellefleur
True Blood



513

Steven Bauer
as Avi
Ray Donovan



514

Richard Belzer
as Sergeant John Munch
Law & Order: Special Victims Unit



515

Manu Bennett
as Slade Wilson aka Deathstroke
Arrow



516

Sean Berdy
as Emmett Bledsoe
Switched At Birth





Outstanding Supporting Actor In A Drama Series

For a continuing performance in a drama series. Emmy to performer. NOTE: VOTE FOR NO MORE THAN SIX achievements in this category that you have seen and feel are worthy of nomination. (More than six votes in this category will void all votes in this category.) Photos, color or black & white, were optional.

517 **George Blagden**
as Athelstan
Vikings



518 **Mark Boone Junior**
as Robert "Bobby Elvis" Munson
Sons Of Anarchy



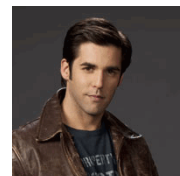
519 **Josh Bowman**
as Daniel Grayson
Revenge



520 **Bruce Boxleitner**
as Bob Beldon
Debbie Macomber's Cedar Cove



521 **Jordan Bridges**
as Frankie Rizzoli, Jr.
Rizzoli & Isles





Outstanding Supporting Actor In A Drama Series

For a continuing performance in a drama series. Emmy to performer. NOTE: VOTE FOR NO MORE THAN SIX achievements in this category that you have seen and feel are worthy of nomination. (More than six votes in this category will void all votes in this category.) Photos, color or black & white, were optional.

522

Tyree Brown
as Jabbar
Parenthood



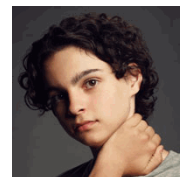
523

Phil Burke
as Mickey McGuinness
Hell On Wheels



524

Max Burkholder
as Max Braverman
Parenthood



525

Jere Burns
as Wynn Duffy
Justified



526

LeVar Burton
as Paul Haley
Perception



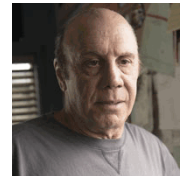


Outstanding Supporting Actor In A Drama Series

For a continuing performance in a drama series. Emmy to performer. NOTE: VOTE FOR NO MORE THAN SIX achievements in this category that you have seen and feel are worthy of nomination. (More than six votes in this category will void all votes in this category.) Photos, color or black & white, were optional.

527

Dayton Callie
as Wayne Unser
Sons Of Anarchy



528

Nestor Carbonell
as Sheriff Alex Romero
Bates Motel



529

Len Cariou
as Henry Reagan
Blue Bloods



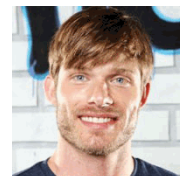
530

Robert Carlyle
as Rumplestiltskin/Mr. Gold
Once Upon A Time



531

Chris Carmack
as Will Lexington
Nashville



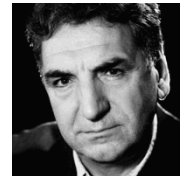


Outstanding Supporting Actor In A Drama Series

For a continuing performance in a drama series. Emmy to performer. NOTE: VOTE FOR NO MORE THAN SIX achievements in this category that you have seen and feel are worthy of nomination. (More than six votes in this category will void all votes in this category.) Photos, color or black & white, were optional.

532

Jim Carter
as Mr. Carson
Downton Abbey



533

Justin Chambers
as Alex Karev
Grey's Anatomy



534

Michael Paul Chan
as Lt. Mike Tao
Major Crimes



535

Kevin Chapman
as Lionel Fusco
Person of Interest



536

Josh Charles
as Will Gardner
The Good Wife





Outstanding Supporting Actor In A Drama Series

For a continuing performance in a drama series. Emmy to performer. NOTE: VOTE FOR NO MORE THAN SIX achievements in this category that you have seen and feel are worthy of nomination. (More than six votes in this category will void all votes in this category.) Photos, color or black & white, were optional.

537

Bailey Chase
as Branch Connally
Longmire



538

John Cho
as Officer Andy Brooks
Sleepy Hollow



539

Kim Coates
as Alex "Tig" Trager
Sons Of Anarchy



540

Chad L. Coleman
as Tyreese
The Walking Dead



541

Stephen Collins
as Dr. Gene Porter
Revolution





Outstanding Supporting Actor In A Drama Series

For a continuing performance in a drama series. Emmy to performer. NOTE: VOTE FOR NO MORE THAN SIX achievements in this category that you have seen and feel are worthy of nomination. (More than six votes in this category will void all votes in this category.) Photos, color or black & white, were optional.

542 **Common**
as Elam Ferguson
Hell On Wheels



543 **Torrance Coombs**
as Bash
Reign



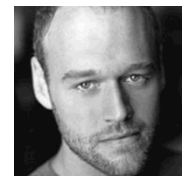
544 **David Costabile**
as Simon Boyd
Low Winter Sun



545 **Nikolaj Coster-Waldau**
as Jamie Lannister
Game Of Thrones



546 **Elliot Cowan**
as Lorenzo Medici
Da Vinci's Demons





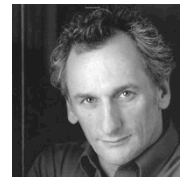
Outstanding Supporting Actor In A Drama Series

For a continuing performance in a drama series. Emmy to performer. NOTE: VOTE FOR NO MORE THAN SIX achievements in this category that you have seen and feel are worthy of nomination. (More than six votes in this category will void all votes in this category.) Photos, color or black & white, were optional.

547 **Brendan Coyle**
as John Bates
Downton Abbey



548 **Matt Craven**
as Sheriff Fred Langston
Resurrection



549 **Roger R. Cross**
as Travis Verta
Continuum



550 **Raymond Cruz**
as Det. Julio Sanchez
Major Crimes



551 **Colin Cunningham**
as John Pope
Falling Skies





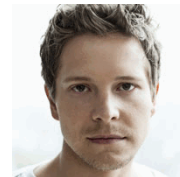
Outstanding Supporting Actor In A Drama Series

For a continuing performance in a drama series. Emmy to performer. NOTE: VOTE FOR NO MORE THAN SIX achievements in this category that you have seen and feel are worthy of nomination. (More than six votes in this category will void all votes in this category.) Photos, color or black & white, were optional.

552 **Henry Czerny**
as Conrad Grayson
Revenge



553 **Matt Czuchry**
as Cary Agos
The Good Wife



554 **Nicholas D'Agosto**
as Dr. Ethan Haas
Masters of Sex



555 **Josh Dallas**
as Prince Charming/David
Once Upon A Time



556 **Brett Dalton**
as Agent Grant Ward
Marvel's Agents of S.H.I.E.L.D.





Outstanding Supporting Actor In A Drama Series

For a continuing performance in a drama series. Emmy to performer. NOTE: VOTE FOR NO MORE THAN SIX achievements in this category that you have seen and feel are worthy of nomination. (More than six votes in this category will void all votes in this category.) Photos, color or black & white, were optional.

557

Charles Dance
as Tywin Lannister
Game Of Thrones



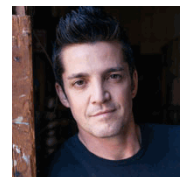
558

Iain De Caestecker
as Agent Leo Fitz
Marvel's Agents of S.H.I.E.L.D.



559

Jonathan Del Arco
as Dr. Morales
Major Crimes



560

Patrick Dempsey
as Derek Shepherd
Grey's Anatomy



561

Tony Denison
as Lt. Andy Flynn
Major Crimes

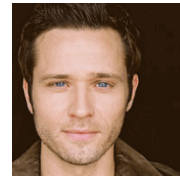




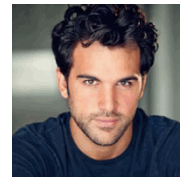
Outstanding Supporting Actor In A Drama Series

For a continuing performance in a drama series. Emmy to performer. NOTE: VOTE FOR NO MORE THAN SIX achievements in this category that you have seen and feel are worthy of nomination. (More than six votes in this category will void all votes in this category.) Photos, color or black & white, were optional.

562 **Seamus Dever**
as Kevin Ryan
Castle



563 **Juan Pablo di Pace**
as Nicholas Trevino
Dallas



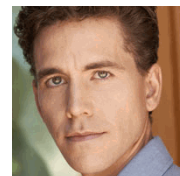
564 **Lou Diamond Phillips**
as Henry Standing Bear
Longmire



565 **Guillermo Diaz**
as Huck
Scandal



566 **Brian Dietzen**
as Jimmy Palmer
NCIS



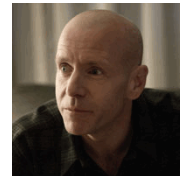


Outstanding Supporting Actor In A Drama Series

For a continuing performance in a drama series. Emmy to performer. NOTE: VOTE FOR NO MORE THAN SIX achievements in this category that you have seen and feel are worthy of nomination. (More than six votes in this category will void all votes in this category.) Photos, color or black & white, were optional.

567

Hugh Dillon
as Francis Becker
The Killing



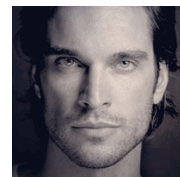
568

Peter Dinklage
as Tyrion Lannister
Game Of Thrones



569

Daniel DiTomaso
as Killian Gardiner
Witches Of East End



570

Rockmond Dunbar
as Eli Roosevelt
Sons Of Anarchy



571

Rockmond Dunbar
as Dennis Abbott
The Mentalist





Outstanding Supporting Actor In A Drama Series

For a continuing performance in a drama series. Emmy to performer. NOTE: VOTE FOR NO MORE THAN SIX achievements in this category that you have seen and feel are worthy of nomination. (More than six votes in this category will void all votes in this category.) Photos, color or black & white, were optional.

572

Ryan Eggold

as Tom Keen

The Blacklist



573

David Eigenberg

as Christopher Hermann

Chicago Fire



574

Nelsan Ellis

as Lafayette Reynolds

True Blood

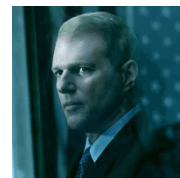


575

Noah Emmerich

as Stan Beeman

The Americans



576

Ben Esler

as Sean McGuinness

Hell On Wheels





Outstanding Supporting Actor In A Drama Series

For a continuing performance in a drama series. Emmy to performer. NOTE: VOTE FOR NO MORE THAN SIX achievements in this category that you have seen and feel are worthy of nomination. (More than six votes in this category will void all votes in this category.) Photos, color or black & white, were optional.

577

Raúl Esparza

as A.D.A. Rafael Barba

Law & Order: Special Victims Unit



578

Giancarlo Esposito

as Major Tom Neville

Revolution



579

Will Estes

as Jamie Reagan

Blue Bloods



580

Frankie Faison

as Sugar Bates

Banshee



581

James Faulkner

as Pope Sixtus IV

Da Vinci's Demons





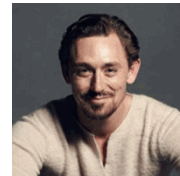
Outstanding Supporting Actor In A Drama Series

For a continuing performance in a drama series. Emmy to performer. NOTE: VOTE FOR NO MORE THAN SIX achievements in this category that you have seen and feel are worthy of nomination. (More than six votes in this category will void all votes in this category.) Photos, color or black & white, were optional.

582

JJ Feild

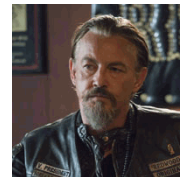
as Major John Andre
Turn



583

Tommy Flanagan

as Filip "Chibs" Telford
Sons Of Anarchy



584

Dann Florek

as Captain Donald Cragen
Law & Order: Special Victims Unit



585

Patrick John Flueger

as Officer Adam Ruzek
Chicago P.D.



586

Scott Foley

as Jake Ballard
Scandal





Outstanding Supporting Actor In A Drama Series

For a continuing performance in a drama series. Emmy to performer. NOTE: VOTE FOR NO MORE THAN SIX achievements in this category that you have seen and feel are worthy of nomination. (More than six votes in this category will void all votes in this category.) Photos, color or black & white, were optional.

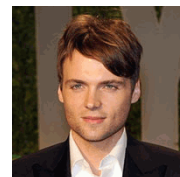
587 **Max Fowler**
as Twitch
The Killing



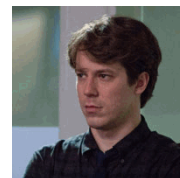
588 **Rupert Friend**
as Peter Quinn
Homeland



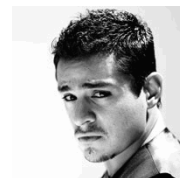
589 **Seth Gabel**
as Cotton Mather
Salem



590 **John Gallagher, Jr.**
as Jim Harper
The Newsroom



591 **Jesse John Garcia**
as Texas Ranger Freddie Gonzalez
From Dusk Till Dawn: The Series

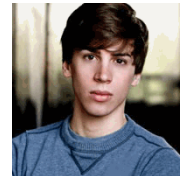




Outstanding Supporting Actor In A Drama Series

For a continuing performance in a drama series. Emmy to performer. NOTE: VOTE FOR NO MORE THAN SIX achievements in this category that you have seen and feel are worthy of nomination. (More than six votes in this category will void all votes in this category.) Photos, color or black & white, were optional.

592 **Jordan Gavaris**
as Felix
Orphan Black



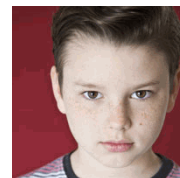
593 **Mark Ghanime**
as Major Sergio Ballejeros
Helix



594 **Michel Gill**
as President Garrett Walker
House of Cards



595 **Landon Gimenez**
as Jacob Langston
Resurrection



596 **Walton Goggins**
as Boyd Crowder
Justified





Outstanding Supporting Actor In A Drama Series

For a continuing performance in a drama series. Emmy to performer. NOTE: VOTE FOR NO MORE THAN SIX achievements in this category that you have seen and feel are worthy of nomination. (More than six votes in this category will void all votes in this category.) Photos, color or black & white, were optional.

597

Tony Goldwyn

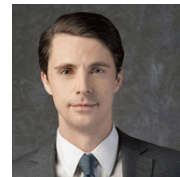
as President Fitzgerald Grant
Scandal



598

Matthew Goode

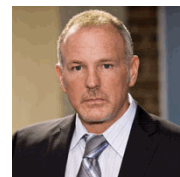
as Finn Polmar
The Good Wife



599

Brian Goodman

as Lt. Det. Sean Cavanaugh
Rizzoli & Isles



600

Christopher Gorham

as Auggie Anderson
Covert Affairs



601

Burn Gorman

as Major Hewlett
Turn





Outstanding Supporting Actor In A Drama Series

For a continuing performance in a drama series. Emmy to performer. NOTE: VOTE FOR NO MORE THAN SIX achievements in this category that you have seen and feel are worthy of nomination. (More than six votes in this category will void all votes in this category.) Photos, color or black & white, were optional.

602 **Lev Gorn**
as Arkady
The Americans



603 **Robert Gossett**
as Assistant Chief Russell Taylor
Major Crimes



604 **Stephen Graham**
as Al Capone
Boardwalk Empire



605 **Trystan Gravelle**
as Victor Colleano
Mr Selfridge (Masterpiece)



606 **Robson Green**
as Lt. Col. Philip Locke
Strike Back

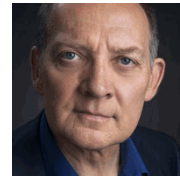




Outstanding Supporting Actor In A Drama Series

For a continuing performance in a drama series. Emmy to performer. NOTE: VOTE FOR NO MORE THAN SIX achievements in this category that you have seen and feel are worthy of nomination. (More than six votes in this category will void all votes in this category.) Photos, color or black & white, were optional.

607 **Zach Grenier**
as David Lee
The Good Wife



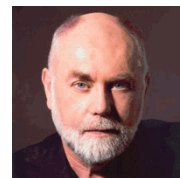
608 **Demetrius Grosse**
as Emmett Yawners
Banshee



609 **Pooch Hall**
as Daryll
Ray Donovan



610 **Robert David Hall**
as Dr. Albert Robbins
CSI: Crime Scene Investigation



611 **Kit Harington**
as Jon Snow
Game Of Thrones





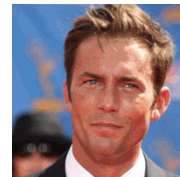
Outstanding Supporting Actor In A Drama Series

For a continuing performance in a drama series. Emmy to performer. NOTE: VOTE FOR NO MORE THAN SIX achievements in this category that you have seen and feel are worthy of nomination. (More than six votes in this category will void all votes in this category.) Photos, color or black & white, were optional.

612 **Thorbjørn Harr**
as Jarl Borg
Vikings



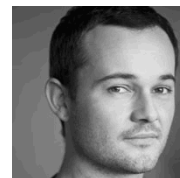
613 **Desmond Harrington**
as Joey Quinn
Dexter



614 **LaRoyce Hawkins**
as Officer Kevin Atwater
Chicago P.D.



615 **Daniel Henshall**
as Caleb
Turn



616 **Christopher Heyerdahl**
as The Swede
Hell On Wheels





Outstanding Supporting Actor In A Drama Series

For a continuing performance in a drama series. Emmy to performer. NOTE: VOTE FOR NO MORE THAN SIX achievements in this category that you have seen and feel are worthy of nomination. (More than six votes in this category will void all votes in this category.) Photos, color or black & white, were optional.

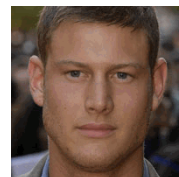
617 **Mark Hildreth**
as Pastor Tom Hale
Resurrection



618 **Rick Hoffman**
as Louis Litt
Suits



619 **Tom Hopper**
as Billy Bones
Black Sails



620 **Russell Hornsby**
as Hank Griffin
Grimm



621 **Ruben Santiago Hudson**
as Charles Dawson
Low Winter Sun





Outstanding Supporting Actor In A Drama Series

For a continuing performance in a drama series. Emmy to performer. NOTE: VOTE FOR NO MORE THAN SIX achievements in this category that you have seen and feel are worthy of nomination. (More than six votes in this category will void all votes in this category.) Photos, color or black & white, were optional.

622

Jon Huertas
as Javier Esposito
Castle



623

Danny Huston
as Ben Diamond
Magic City



624

Jack Huston
as Richard Harrow
Boardwalk Empire



625

Ice-T
as Detective Odafin "Fin" Tutuola
Law & Order: Special Victims Unit



626

Oliver Jackson-Cohen
as Jonathan Harker
Dracula

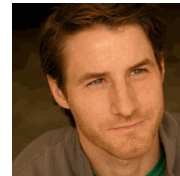




Outstanding Supporting Actor In A Drama Series

For a continuing performance in a drama series. Emmy to performer. NOTE: VOTE FOR NO MORE THAN SIX achievements in this category that you have seen and feel are worthy of nomination. (More than six votes in this category will void all votes in this category.) Photos, color or black & white, were optional.

627 **Sam Jaeger**
as Joel Graham
Parenthood



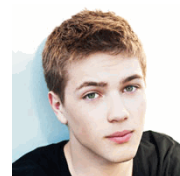
628 **Lennie James**
as Joe Geddes
Low Winter Sun



629 **Michael Raymond James**
as Neal Cassidy/Baelfire
Once Upon A Time



630 **Connor Jessup**
as Ben
Falling Skies



631 **Doug Jones**
as Cochise
Falling Skies





Outstanding Supporting Actor In A Drama Series

For a continuing performance in a drama series. Emmy to performer. NOTE: VOTE FOR NO MORE THAN SIX achievements in this category that you have seen and feel are worthy of nomination. (More than six votes in this category will void all votes in this category.) Photos, color or black & white, were optional.

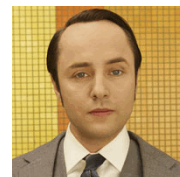
632 **Hakeem Kae-Kazim**
as Mr. Scott
Black Sails



633 **Archie Kao**
as Detective Sheldon Jin
Chicago P.D.



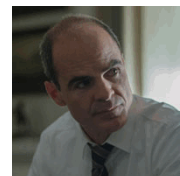
634 **Vincent Kartheiser**
as Pete Campbell
Mad Men



635 **Phillip P. Keene**
as Buzz Watson
Major Crimes



636 **Michael Kelly**
as Doug Stamper
House of Cards





Outstanding Supporting Actor In A Drama Series

For a continuing performance in a drama series. Emmy to performer. NOTE: VOTE FOR NO MORE THAN SIX achievements in this category that you have seen and feel are worthy of nomination. (More than six votes in this category will void all votes in this category.) Photos, color or black & white, were optional.

637

Tory Kittles
as Detective Papania
True Detective



638

Diego Klattenhoff
as Donald Ressler
The Blacklist



639

Maxim Knight
as Matt
Falling Skies



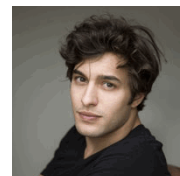
640

Mpho Koaho
as Anthony
Falling Skies



641

Alexander Koch
as Junior Rennie
Under The Dome





Outstanding Supporting Actor In A Drama Series

For a continuing performance in a drama series. Emmy to performer. NOTE: VOTE FOR NO MORE THAN SIX achievements in this category that you have seen and feel are worthy of nomination. (More than six votes in this category will void all votes in this category.) Photos, color or black & white, were optional.

642

Elias Koteas
as James Skinner
The Killing



643

Elias Koteas
as Detective Alvin Olinsky
Chicago P.D.



644

Peter Krause
as Adam Braverman
Parenthood



645

Thomas Kretschmann
as Abraham Van Helsing
Dracula



646

Ryan Kwanten
as Jason Stackhouse
True Blood

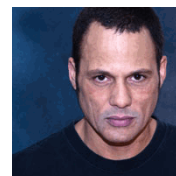




Outstanding Supporting Actor In A Drama Series

For a continuing performance in a drama series. Emmy to performer. NOTE: VOTE FOR NO MORE THAN SIX achievements in this category that you have seen and feel are worthy of nomination. (More than six votes in this category will void all votes in this category.) Photos, color or black & white, were optional.

647 **David Labrava**
as Happy
Sons Of Anarchy



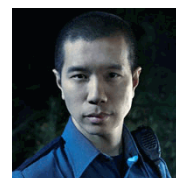
648 **C.S. Lee**
as Vincent Masuka
Dexter



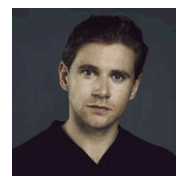
649 **Hoon Lee**
as Job
Banshee



650 **Reggie Lee**
as Sgt. Wu
Grimm



651 **Allen Leech**
as Tom Branson
Downton Abbey





Outstanding Supporting Actor In A Drama Series

For a continuing performance in a drama series. Emmy to performer. NOTE: VOTE FOR NO MORE THAN SIX achievements in this category that you have seen and feel are worthy of nomination. (More than six votes in this category will void all votes in this category.) Photos, color or black & white, were optional.

652

Harry Lennix
as Harold Cooper
The Blacklist



653

Tracy Letts
as Senator Andrew Lockhart
Homeland



654

Ted Levine
as Lieutenant Hank Wade
The Bridge



655

Matthew Lillard
as Daniel Frye
The Bridge



656

Ron Livingston
as Roy Phillips
Boardwalk Empire





Outstanding Supporting Actor In A Drama Series

For a continuing performance in a drama series. Emmy to performer. NOTE: VOTE FOR NO MORE THAN SIX achievements in this category that you have seen and feel are worthy of nomination. (More than six votes in this category will void all votes in this category.) Photos, color or black & white, were optional.

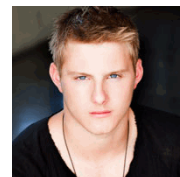
657 **Donal Logue**
as King Horik
Vikings



658 **Todd Lowe**
as Terry Bellefleur
True Blood



659 **Alexander Ludwig**
as Bjorn Lothbrok
Vikings



660 **Billy Lush**
as Nick Paflas
Low Winter Sun



661 **Angus Macfadyen**
as Robert Rogers
Turn





Outstanding Supporting Actor In A Drama Series

For a continuing performance in a drama series. Emmy to performer. NOTE: VOTE FOR NO MORE THAN SIX achievements in this category that you have seen and feel are worthy of nomination. (More than six votes in this category will void all votes in this category.) Photos, color or black & white, were optional.

662 **Kyle MacLachlan**
as Skouras
Believe



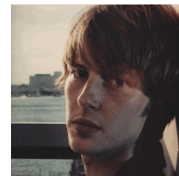
663 **Joshua Malina**
as David Rosen
Scandal



664 **Joe Manganiello**
as Alcide Herveaux
True Blood



665 **Gabriel Mann**
as Nolan Ross
Revenge



666 **Xolo Maridueña**
as Victor Graham
Parenthood





Outstanding Supporting Actor In A Drama Series

For a continuing performance in a drama series. Emmy to performer. NOTE: VOTE FOR NO MORE THAN SIX achievements in this category that you have seen and feel are worthy of nomination. (More than six votes in this category will void all votes in this category.) Photos, color or black & white, were optional.

667

Eddie Marsan
as Terry Donovan
Ray Donovan



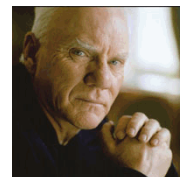
668

Graham Patrick Martin
as Rusty Beck
Major Crimes



669

Malcolm McDowell
as Stanton Infeld
Franklin & Bash



670

Bruce McGill
as Sergeant Detective Vince Korsak
Rizzoli & Isles



671

Zach McGowan
as Captain Charles Vane
Black Sails





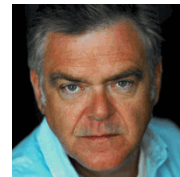
Outstanding Supporting Actor In A Drama Series

For a continuing performance in a drama series. Emmy to performer. NOTE: VOTE FOR NO MORE THAN SIX achievements in this category that you have seen and feel are worthy of nomination. (More than six votes in this category will void all votes in this category.) Photos, color or black & white, were optional.

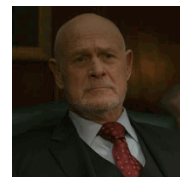
672 **Brandon Jay McLaren**
as Dale Jakes
Graceland



673 **Kevin McNally**
as Judge Richard Woodhull
Turn



674 **Gerald McRaney**
as Raymond Tusk
House of Cards



675 **Colm Meaney**
as Thomas "Doc" Duranti
Hell On Wheels



676 **Jesse Metcalfe**
as Christopher Ewing
Dallas





Outstanding Supporting Actor In A Drama Series

For a continuing performance in a drama series. Emmy to performer. NOTE: VOTE FOR NO MORE THAN SIX achievements in this category that you have seen and feel are worthy of nomination. (More than six votes in this category will void all votes in this category.) Photos, color or black & white, were optional.

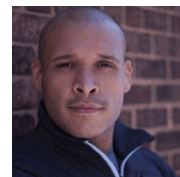
677 **Sean Cameron Michael**
as Richard Guthrie
Black Sails



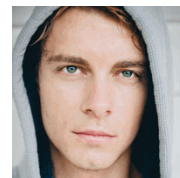
678 **Dash Mihok**
as Bunchy Donovan
Ray Donovan



679 **Joe Minoso**
as Joe Cruz
Chicago Fire



680 **Luke Mitchell**
as John Young
The Tomorrow People



681 **Silas Weir Mitchell**
as Monroe
Grimm





Outstanding Supporting Actor In A Drama Series

For a continuing performance in a drama series. Emmy to performer. NOTE: VOTE FOR NO MORE THAN SIX achievements in this category that you have seen and feel are worthy of nomination. (More than six votes in this category will void all votes in this category.) Photos, color or black & white, were optional.

682

RJ Mitte
as Walter White, Jr.
Breaking Bad



683

Manny Montana
as Joe "Johnny" Tuturro
Graceland



684

David Morrissey
as The Governor
The Walking Dead



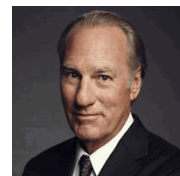
685

Kumail Nanjiani
as Pindar Singh
Franklin & Bash



686

Craig T. Nelson
as Zeek Braverman
Parenthood





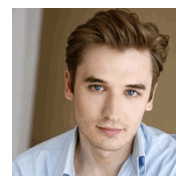
Outstanding Supporting Actor In A Drama Series

For a continuing performance in a drama series. Emmy to performer. NOTE: VOTE FOR NO MORE THAN SIX achievements in this category that you have seen and feel are worthy of nomination. (More than six votes in this category will void all votes in this category.) Photos, color or black & white, were optional.

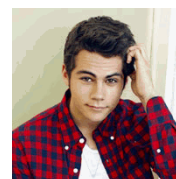
687 **Dean Norris**
as Hank Schrader
Breaking Bad



688 **Seth Numrich**
as Ben Talmadge
Turn



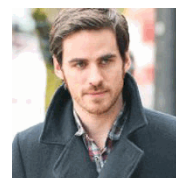
689 **Dylan O'Brien**
as Stiles
Teen Wolf



690 **Bob Odenkirk**
as Saul Goodman
Breaking Bad



691 **Colin O'Donoghue**
as Captain Hook/Killian Jones
Once Upon A Time





Outstanding Supporting Actor In A Drama Series

For a continuing performance in a drama series. Emmy to performer. NOTE: VOTE FOR NO MORE THAN SIX achievements in this category that you have seen and feel are worthy of nomination. (More than six votes in this category will void all votes in this category.) Photos, color or black & white, were optional.

692 **Eric Christian Olsen**
as Marty Deeks
NCIS: Los Angeles



693 **Michael Marisi Ornstein**
as Chucky Marstein
Sons Of Anarchy



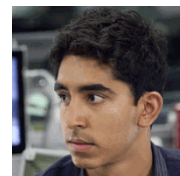
694 **Zak Orth**
as Aaron Pittman
Revolution



695 **Jackson Pace**
as Chris Brody
Homeland



696 **Dev Patel**
as Neal Sampat
The Newsroom



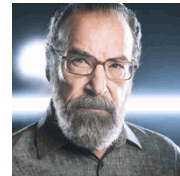


Outstanding Supporting Actor In A Drama Series

For a continuing performance in a drama series. Emmy to performer. NOTE: VOTE FOR NO MORE THAN SIX achievements in this category that you have seen and feel are worthy of nomination. (More than six votes in this category will void all votes in this category.) Photos, color or black & white, were optional.

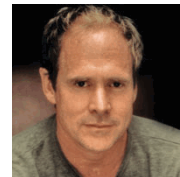
697

Mandy Patinkin
as Saul Berenson
Homeland



698

Will Patton
as Weaver
Falling Skies



699

Aaron Paul
as Jesse Pinkman
Breaking Bad



700

Ron Perlman
as Clarence "Clay" Morrow
Sons Of Anarchy



701

Jeff Perry
as Cyrus Beene
Scandal





Outstanding Supporting Actor In A Drama Series

For a continuing performance in a drama series. Emmy to performer. NOTE: VOTE FOR NO MORE THAN SIX achievements in this category that you have seen and feel are worthy of nomination. (More than six votes in this category will void all votes in this category.) Photos, color or black & white, were optional.

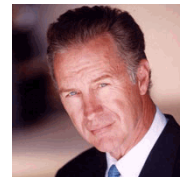
702

James Pickens, Jr.
as Dr. Richard Webber
Grey's Anatomy



703

Geoff Pierson
as Deputy Chief Tom Matthews
Dexter



704

Mitch Pileggi
as Harris Ryland
Dallas



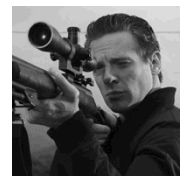
705

Danny Pino
as Detective Nick Amaro
Law & Order: Special Victims Unit



706

Jacob Pitts
as Deputy U.S. Marshal Tim Gutterson
Justified





Outstanding Supporting Actor In A Drama Series

For a continuing performance in a drama series. Emmy to performer. NOTE: VOTE FOR NO MORE THAN SIX achievements in this category that you have seen and feel are worthy of nomination. (More than six votes in this category will void all votes in this category.) Photos, color or black & white, were optional.

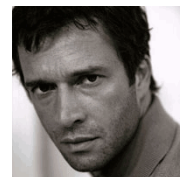
707 **Jesse Plemons**
as Todd
Breaking Bad



708 **Michael Potts**
as Detective Gilbough
True Detective



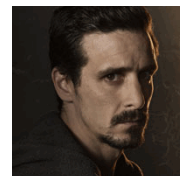
709 **James Purefoy**
as Joe Carroll
The Following



710 **Aidan Quinn**
as Captain Thomas Gregson
Elementary



711 **James Ransone**
as Damon Callis
Low Winter Sun





Outstanding Supporting Actor In A Drama Series

For a continuing performance in a drama series. Emmy to performer. NOTE: VOTE FOR NO MORE THAN SIX achievements in this category that you have seen and feel are worthy of nomination. (More than six votes in this category will void all votes in this category.) Photos, color or black & white, were optional.

712 **Norman Reedus**
as Daryl Dixon
The Walking Dead



713 **James Remar**
as Harry Morgan
Dexter



714 **Chandler Riggs**
as Carl Grimes
The Walking Dead



715 **Blake Ritson**
as Girolamo Riario
Da Vinci's Demons



716 **Linus Roache**
as King Ecbert
Vikings





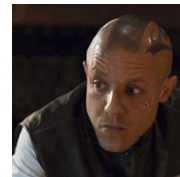
Outstanding Supporting Actor In A Drama Series

For a continuing performance in a drama series. Emmy to performer. NOTE: VOTE FOR NO MORE THAN SIX achievements in this category that you have seen and feel are worthy of nomination. (More than six votes in this category will void all votes in this category.) Photos, color or black & white, were optional.

717 **Dallas Roberts**
as Eliot Delson
Unforgettable



718 **Theo Rossi**
as Carlos "Juice" Ortiz
Sons Of Anarchy



719 **Samuel Roukin**
as Lt. John Simcoe
Turn



720 **Richard Roundtree**
as Paul Patterson, Sr.
Being Mary Jane



721 **Drew Roy**
as Hal
Falling Skies





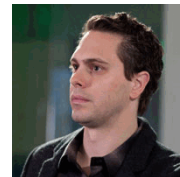
Outstanding Supporting Actor In A Drama Series

For a continuing performance in a drama series. Emmy to performer. NOTE: VOTE FOR NO MORE THAN SIX achievements in this category that you have seen and feel are worthy of nomination. (More than six votes in this category will void all votes in this category.) Photos, color or black & white, were optional.

722 **Mark Ryan**
as Gates
Black Sails



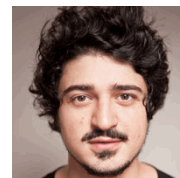
723 **Thomas Sadoski**
as Don Keefer
The Newsroom



724 **Hiroiyuki Sanada**
as Dr. Hiroshi Hatake
Helix



725 **Yuri Sardarov**
as Brian "Otis" Zvonecek
Chicago Fire



726 **Peter Sarsgaard**
as Ray Stewart
The Killing





Outstanding Supporting Actor In A Drama Series

For a continuing performance in a drama series. Emmy to performer. NOTE: VOTE FOR NO MORE THAN SIX achievements in this category that you have seen and feel are worthy of nomination. (More than six votes in this category will void all votes in this category.) Photos, color or black & white, were optional.

727

Toby Schmitz
as Jack Rackham
Black Sails



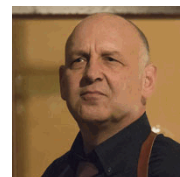
728

John Schneider
as Jim Cryer
Tyler Perry's The Haves And The Have Nots



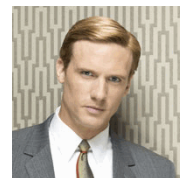
729

Nick Searcy
as Chief Deputy U.S. Marshal Art Mullen
Justified



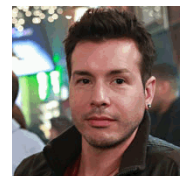
730

Teddy Sears
as Dr. Austin Langham
Masters of Sex



731

Jon Seda
as Detective Antonio Dawson
Chicago P.D.





Outstanding Supporting Actor In A Drama Series

For a continuing performance in a drama series. Emmy to performer. NOTE: VOTE FOR NO MORE THAN SIX achievements in this category that you have seen and feel are worthy of nomination. (More than six votes in this category will void all votes in this category.) Photos, color or black & white, were optional.

732

Keidrich Sellati
as Henry Jennings
The Americans



733

Michael Shannon
as Agent Nelson Van Alden
Boardwalk Empire



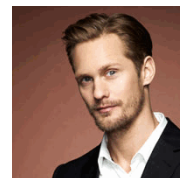
734

Columbus Short
as Harrison Wright
Scandal



735

Alexander Skarsgård
as Eric Northman
True Blood



736

Gustaf Skarsgård
as Floki
Vikings





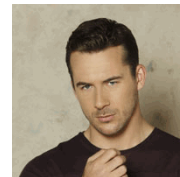
Outstanding Supporting Actor In A Drama Series

For a continuing performance in a drama series. Emmy to performer. NOTE: VOTE FOR NO MORE THAN SIX achievements in this category that you have seen and feel are worthy of nomination. (More than six votes in this category will void all votes in this category.) Photos, color or black & white, were optional.

737 **John Slattery**
as Roger Sterling
Mad Men



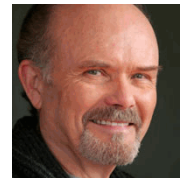
738 **Barry Sloane**
as Aiden Mathis
Revenge



739 **Arjay Smith**
as Max Lewicki
Perception



740 **Kurtwood Smith**
as Henry Langston
Resurrection



741 **Jimmy Smits**
as Nero Padilla
Sons Of Anarchy



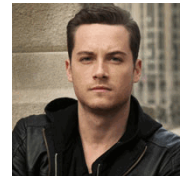


Outstanding Supporting Actor In A Drama Series

For a continuing performance in a drama series. Emmy to performer. NOTE: VOTE FOR NO MORE THAN SIX achievements in this category that you have seen and feel are worthy of nomination. (More than six votes in this category will void all votes in this category.) Photos, color or black & white, were optional.

742

Jesse Lee Soffer
as Detective Jay Halstead
Chicago P.D.



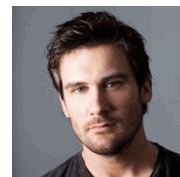
743

Paul Sparks
as Mickey Doyle
Boardwalk Empire



744

Clive Standen
as Rollo
Vikings



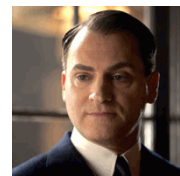
745

Christian Stolte
as Randy "Mouch" McHolland
Chicago Fire



746

Michael Stuhlbarg
as Arnold Rothstein
Boardwalk Empire

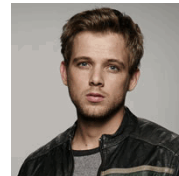




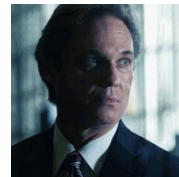
Outstanding Supporting Actor In A Drama Series

For a continuing performance in a drama series. Emmy to performer. NOTE: VOTE FOR NO MORE THAN SIX achievements in this category that you have seen and feel are worthy of nomination. (More than six votes in this category will void all votes in this category.) Photos, color or black & white, were optional.

747 **Max Thieriot**
as Dylan Massett
Bates Motel



748 **Richard Thomas**
as Agent Gaad
The Americans



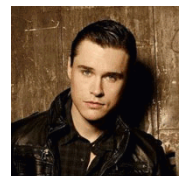
749 **Ulrich Thomsen**
as Kai Proctor
Banshee



750 **Sam Trammell**
as Sam Merlotte
True Blood



751 **Sam Underwood**
as Luke / Sam
The Following



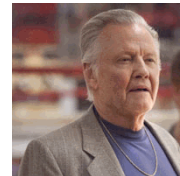


Outstanding Supporting Actor In A Drama Series

For a continuing performance in a drama series. Emmy to performer. NOTE: VOTE FOR NO MORE THAN SIX achievements in this category that you have seen and feel are worthy of nomination. (More than six votes in this category will void all votes in this category.) Photos, color or black & white, were optional.

752

Jon Voight
as Mickey Donovan
Ray Donovan



753

Donnie Wahlberg
as Danny Reagan
Blue Bloods



754

Eamonn Walker
as Battalion Chief Wallace Boden
Chicago Fire



755

Sam Waterston
as Charlie Skinner
The Newsroom



756

Nick Wechsler
as Jack Porter
Revenge





Outstanding Supporting Actor In A Drama Series

For a continuing performance in a drama series. Emmy to performer. NOTE: VOTE FOR NO MORE THAN SIX achievements in this category that you have seen and feel are worthy of nomination. (More than six votes in this category will void all votes in this category.) Photos, color or black & white, were optional.

757 **Shea Whigham**
as Eli Thompson
Boardwalk Empire



758 **Jesse Williams**
as Jackson Avery
Grey's Anatomy



759 **Michael Kenneth Williams**
as Chalky White
Boardwalk Empire



760 **Scott Wilson**
as Hershel Greene
The Walking Dead



761 **Eric Winter**
as Dash Gardiner
Witches Of East End





Outstanding Supporting Actor In A Drama Series

For a continuing performance in a drama series. Emmy to performer. NOTE: VOTE FOR NO MORE THAN SIX achievements in this category that you have seen and feel are worthy of nomination. (More than six votes in this category will void all votes in this category.) Photos, color or black & white, were optional.

762

Jeffrey Wright
as Valentin Narcisse
Boardwalk Empire



763

Thomas M. Wright
as Steven Linder
The Bridge



764

Steven Yeun
as Glenn Rhee
The Walking Dead



765

Aaron Yoo
as Russell
The Tomorrow People



766

David Zayas
as Angel Batista
Dexter



End of Category



Outstanding Supporting Actor In A Miniseries Or A Movie

For a performance in a miniseries or a movie. Emmy to performer. NOTE: VOTE FOR NO MORE THAN SIX achievements in this category that you have seen and feel are worthy of nomination. (More than six votes in this category will void all votes in this category.) Photos, color or black & white, were optional.

767 **Simon Russell Beale**
as Falstaff
The Hollow Crown (Great Performances)



768 **Corbin Bernsen**
as Henry Spencer
Psych The Musical



769 **Matt Bomer**
as Felix Turner
The Normal Heart



770 **David Boreanaz**
as Jace Cooper
Full Circle



771 **Christian Borle**
as Max Detweiler
The Sound of Music Live!





Outstanding Supporting Actor In A Miniseries Or A Movie

For a performance in a miniseries or a movie. Emmy to performer. NOTE: VOTE FOR NO MORE THAN SIX achievements in this category that you have seen and feel are worthy of nomination. (More than six votes in this category will void all votes in this category.) Photos, color or black & white, were optional.

772

Billy Brown
as Archer Petit
Hostages



773

Ed Burns
as Bugsy Siegel
Mob City



774

Billy Campbell
as Trent Campbell
Full Circle



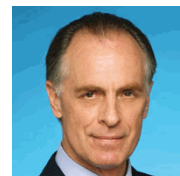
775

Billy Campbell
as Andrew Jennings
Lizzie Borden Took An Ax



776

Keith Carradine
as Lou Solverson
 Fargo



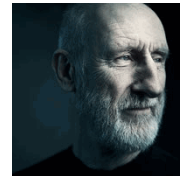


Outstanding Supporting Actor In A Miniseries Or A Movie

For a performance in a miniseries or a movie. Emmy to performer. NOTE: VOTE FOR NO MORE THAN SIX achievements in this category that you have seen and feel are worthy of nomination. (More than six votes in this category will void all votes in this category.) Photos, color or black & white, were optional.

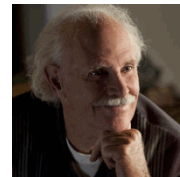
777

James Cromwell
as Justice Sumpter
The Trials of Cate McCall



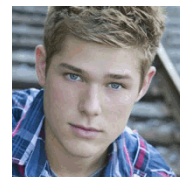
778

Bruce Dern
as Grandpa
Pete's Christmas



779

Mason Dye
as Christopher
Flowers In The Attic



780

Tom Felton
as Tim Abbott
Full Circle



781

James Frain
as Lord Hardwick
The White Queen





Outstanding Supporting Actor In A Miniseries Or A Movie

For a performance in a miniseries or a movie. Emmy to performer. NOTE: VOTE FOR NO MORE THAN SIX achievements in this category that you have seen and feel are worthy of nomination. (More than six votes in this category will void all votes in this category.) Photos, color or black & white, were optional.

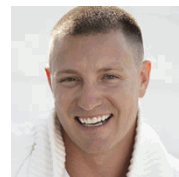
782 **Martin Freeman**
as John Watson
Sherlock: His Last Vow (Masterpiece)



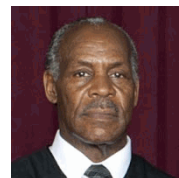
783 **Victor Garber**
as Mason Fuller
The Hunters



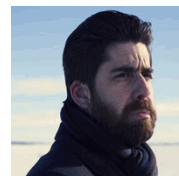
784 **Lane Garrison**
as Buck Barrow
Bonnie & Clyde



785 **Danny Glover**
as Justice Thurgood Marshall
Muhammad Ali's Greatest Fight



786 **Adam Goldberg**
as Mr. Numbers
Fargo

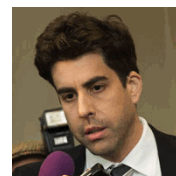




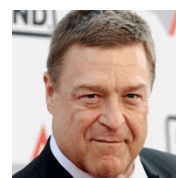
Outstanding Supporting Actor In A Miniseries Or A Movie

For a performance in a miniseries or a movie. Emmy to performer. NOTE: VOTE FOR NO MORE THAN SIX achievements in this category that you have seen and feel are worthy of nomination. (More than six votes in this category will void all votes in this category.) Photos, color or black & white, were optional.

787 **Adam Goldberg**
as Howard K. Stern
Anna Nicole



788 **John Goodman**
as Masterson
Dancing On The Edge



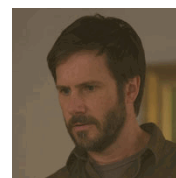
789 **Bill Hader**
as Rags
Clear History



790 **Philip Baker Hall**
as McKenzie
Clear History



791 **Josh Hamilton**
as Hank Foxx
American Horror Story: Coven





Outstanding Supporting Actor In A Miniseries Or A Movie

For a performance in a miniseries or a movie. Emmy to performer. NOTE: VOTE FOR NO MORE THAN SIX achievements in this category that you have seen and feel are worthy of nomination. (More than six votes in this category will void all votes in this category.) Photos, color or black & white, were optional.

792 **Jon Hamm**
as Will Haney
Clear History



793 **Colin Hanks**
as Deputy Gus Grimly
Fargo



794 **Russell Harvard**
as Mr. Wrench
Fargo



795 **Dulé Hill**
as Burton "Gus" Guster
Psych The Musical



796 **Glenn Howerton**
as Don Chumph
Fargo





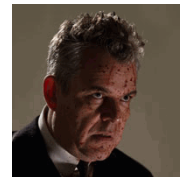
Outstanding Supporting Actor In A Miniseries Or A Movie

For a performance in a miniseries or a movie. Emmy to performer. NOTE: VOTE FOR NO MORE THAN SIX achievements in this category that you have seen and feel are worthy of nomination. (More than six votes in this category will void all votes in this category.) Photos, color or black & white, were optional.

797 **William Hurt**
as Frank Hamer
Bonnie & Clyde



798 **Danny Huston**
as The Axeman
American Horror Story: Coven



799 **Jason Isaacs**
as Roman Castevet
Rosemary's Baby



800 **Gregory Itzin**
as Mayor Fletcher Bowron
Mob City



801 **Cheyenne Jackson**
as Peter Barlow
Full Circle





Outstanding Supporting Actor In A Miniseries Or A Movie

For a performance in a miniseries or a movie. Emmy to performer. NOTE: VOTE FOR NO MORE THAN SIX achievements in this category that you have seen and feel are worthy of nomination. (More than six votes in this category will void all votes in this category.) Photos, color or black & white, were optional.

802 **Michael Keaton**
as Joe Stumpo
Clear History



803 **Keegan-Michael Key**
as Bill Budge
Fargo



804 **Taylor Kitsch**
as Bruce Niles
The Normal Heart



805 **Robert Knepper**
as Sid Rothman
Mob City



806 **Martin Landau**
as J. Howard Marshall
Anna Nicole





Outstanding Supporting Actor In A Miniseries Or A Movie

For a performance in a miniseries or a movie. Emmy to performer. NOTE: VOTE FOR NO MORE THAN SIX achievements in this category that you have seen and feel are worthy of nomination. (More than six votes in this category will void all votes in this category.) Photos, color or black & white, were optional.

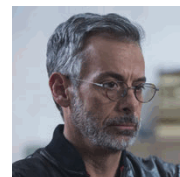
807 **Frank Langella**
as Chief Justice Warren Burger
Muhammad Ali's Greatest Fight



808 **Jeremy Luke**
as Mickey Cohen
Mob City



809 **Joe Mantello**
as Mickey Marcus
The Normal Heart



810 **Danny McBride**
as Frank
Clear History



811 **Julian McMahon**
as Stanley Murphy
Full Circle





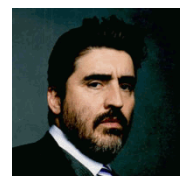
Outstanding Supporting Actor In A Miniseries Or A Movie

For a performance in a miniseries or a movie. Emmy to performer. NOTE: VOTE FOR NO MORE THAN SIX achievements in this category that you have seen and feel are worthy of nomination. (More than six votes in this category will void all votes in this category.) Photos, color or black & white, were optional.

812 **Alfred Molina**
as Ben Weeks
The Normal Heart



813 **Alfred Molina**
as Robert
Return To Zero



814 **David Morse**
as Terry Colson
Treme



815 **Tim Blake Nelson**
as Meeker
Klondike



816 **Jack Noseworthy**
as Bobby Kennedy
Killing Kennedy





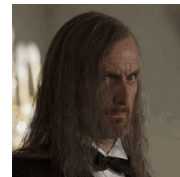
Outstanding Supporting Actor In A Miniseries Or A Movie

For a performance in a miniseries or a movie. Emmy to performer. NOTE: VOTE FOR NO MORE THAN SIX achievements in this category that you have seen and feel are worthy of nomination. (More than six votes in this category will void all votes in this category.) Photos, color or black & white, were optional.

817 **Bob Odenkirk**
as Deputy Bill Oswalt
Fargo



818 **Denis O'Hare**
as Spalding
American Horror Story: Coven



819 **Timothy Omundson**
as Carlton Lassiter
Psych The Musical



820 **Haley Joel Osment**
as Winston Morehouse
The Spoils Of Babylon



821 **Jim Parsons**
as Tommy Boatwright
The Normal Heart





Outstanding Supporting Actor In A Miniseries Or A Movie

For a performance in a miniseries or a movie. Emmy to performer. NOTE: VOTE FOR NO MORE THAN SIX achievements in this category that you have seen and feel are worthy of nomination. (More than six votes in this category will void all votes in this category.) Photos, color or black & white, were optional.

822

Jordan Peele
as Webb Pepper
Fargo



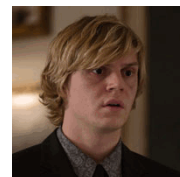
823

Mark Pellegrino
as Detective Welch
The Trials of Cate McCall



824

Evan Peters
as Kyle Spence
American Horror Story: Coven



825

Mekhi Phifer
as Lewis
A Day Late And A Dollar Short



826

Oliver Platt
as Stavros Milos
Fargo





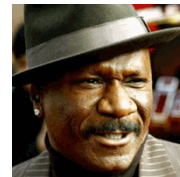
Outstanding Supporting Actor In A Miniseries Or A Movie

For a performance in a miniseries or a movie. Emmy to performer. NOTE: VOTE FOR NO MORE THAN SIX achievements in this category that you have seen and feel are worthy of nomination. (More than six votes in this category will void all votes in this category.) Photos, color or black & white, were optional.

827 **Lance Reddick**
as Papa Legba
American Horror Story: Coven



828 **Ving Rhames**
as Cecil
A Day Late And A Dollar Short



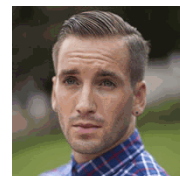
829 **Tim Robbins**
as Jonas Morehouse
The Spoils Of Babylon



830 **Tim Roth**
as The Count
Klondike



831 **Will Rothhaar**
as Lee Harvey Oswald
Killing Kennedy





Outstanding Supporting Actor In A Miniseries Or A Movie

For a performance in a miniseries or a movie. Emmy to performer. NOTE: VOTE FOR NO MORE THAN SIX achievements in this category that you have seen and feel are worthy of nomination. (More than six votes in this category will void all votes in this category.) Photos, color or black & white, were optional.

832 **Sam Shepard**
as Father Judge
Klondike



833 **Riley Smith**
as Tommy
Christmas In Conway (Hallmark Hall of Fame)



834 **JB Smoove**
as Jasper
Clear History



835 **Jesse Lee Soffer**
as Travis Alexander
Jodi Arias: Dirty Little Secret



836 **Brian Tee**
as Coach Chow
The Gabby Douglas Story





Outstanding Supporting Actor In A Miniseries Or A Movie

For a performance in a miniseries or a movie. Emmy to performer. NOTE: VOTE FOR NO MORE THAN SIX achievements in this category that you have seen and feel are worthy of nomination. (More than six votes in this category will void all votes in this category.) Photos, color or black & white, were optional.

837

Blair Underwood

as Ludie Watts

The Trip To Bountiful

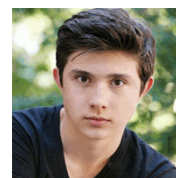


838

Mateus Ward

as Jake Sanders

Hostages



End of Category



Outstanding Supporting Actress In A Comedy Series

For a continuing performance in a comedy series. Emmy to performer. NOTE: VOTE FOR NO MORE THAN SIX achievements in this category that you have seen and feel are worthy of nomination. (More than six votes in this category will void all votes in this category.) Photos, color or black & white, were optional.

839 **Pamela Adlon**
as Marcy Runkle
Californication



840 **Carrie Aizley**
as Kitty Chadwick
Family Tree



841 **Katie Aselton**
as Jenny
The League



842 **Lauren Ash**
as Marika
Super Fun Night



843 **Valerie Azlynn**
as Melanie
Sullivan & Son





Outstanding Supporting Actress In A Comedy Series

For a continuing performance in a comedy series. Emmy to performer. NOTE: VOTE FOR NO MORE THAN SIX achievements in this category that you have seen and feel are worthy of nomination. (More than six votes in this category will void all votes in this category.) Photos, color or black & white, were optional.

844 **Vivian Bang**
as Susan
Sullivan & Son



845 **Vanessa Bayer**
as Various characters
Saturday Night Live



846 **Stephanie Beatriz**
as Detective Rosa Diaz
Brooklyn Nine-Nine



847 **Kristen Bell**
as Jeannie van der Hooven
House of Lies



848 **Lake Bell**
as Dr. Cat Black
Childrens Hospital





Outstanding Supporting Actress In A Comedy Series

For a continuing performance in a comedy series. Emmy to performer. NOTE: VOTE FOR NO MORE THAN SIX achievements in this category that you have seen and feel are worthy of nomination. (More than six votes in this category will void all votes in this category.) Photos, color or black & white, were optional.

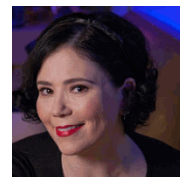
849 **Valerie Bertinelli**
as Melanie Moretti
Hot In Cleveland



850 **Mayim Bialik**
as Amy Farrah Fowler
The Big Bang Theory



851 **Alex Borstein**
as Dawn Forchette
Getting On



852 **Julie Bowen**
as Claire Dunphy
Modern Family



853 **Sufe Bradshaw**
as Sue Wilson
Veep





Outstanding Supporting Actress In A Comedy Series

For a continuing performance in a comedy series. Emmy to performer. NOTE: VOTE FOR NO MORE THAN SIX achievements in this category that you have seen and feel are worthy of nomination. (More than six votes in this category will void all votes in this category.) Photos, color or black & white, were optional.

854

Betsy Brandt

as Annie Henry

The Michael J. Fox Show

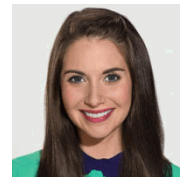


855

Alison Brie

as Annie Edison

Community



856

Danielle Brooks

as Tasha "Taystee" Jefferson

Orange Is The New Black



857

Dorian Brown

as Kristen Newman

Wilfred



858

Yvette Nicole Brown

as Shirley Bennett

Community





Outstanding Supporting Actress In A Comedy Series

For a continuing performance in a comedy series. Emmy to performer. NOTE: VOTE FOR NO MORE THAN SIX achievements in this category that you have seen and feel are worthy of nomination. (More than six votes in this category will void all votes in this category.) Photos, color or black & white, were optional.

859

Carrie Brownstein
as Various characters
Portlandia



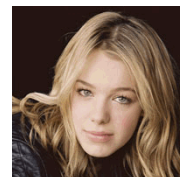
860

Aidy Bryant
as Various characters
Saturday Night Live



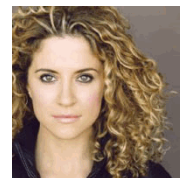
861

Sadie Calvano
as Violet
Mom



862

Alexis Carra
as Jessica
Mixology



863

Tonita Castro
as Edna
Dads

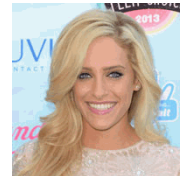




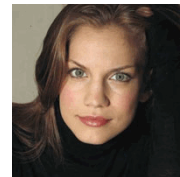
Outstanding Supporting Actress In A Comedy Series

For a continuing performance in a comedy series. Emmy to performer. NOTE: VOTE FOR NO MORE THAN SIX achievements in this category that you have seen and feel are worthy of nomination. (More than six votes in this category will void all votes in this category.) Photos, color or black & white, were optional.

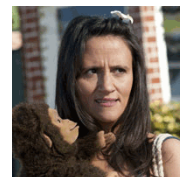
864 **Carly Chaikin**
as Dalia Royce
Suburgatory



865 **Anna Chlumsky**
as Amy Brookheimer
Veep



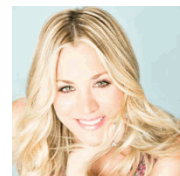
866 **Nina Conti**
as Bea Chadwick
Family Tree



867 **Jennifer Coolidge**
as Sophie Kachinsky
2 Broke Girls



868 **Kaley Cuoco**
as Penny
The Big Bang Theory





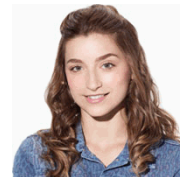
Outstanding Supporting Actress In A Comedy Series

For a continuing performance in a comedy series. Emmy to performer. NOTE: VOTE FOR NO MORE THAN SIX achievements in this category that you have seen and feel are worthy of nomination. (More than six votes in this category will void all votes in this category.) Photos, color or black & white, were optional.

869 **Cat Deeley**
as Camomile White
Deadbeat



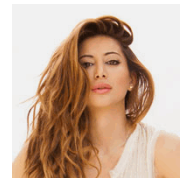
870 **Ava Deluca-Verley**
as Katie Fisher
Growing Up Fisher



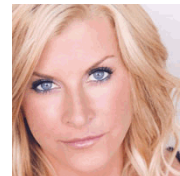
871 **Lucy DeVito**
as Sue
Deadbeat



872 **Noureen DeWulf**
as Lacey
Anger Management



873 **Allison Dunbar**
as Honey
QuickDraw





Outstanding Supporting Actress In A Comedy Series

For a continuing performance in a comedy series. Emmy to performer. NOTE: VOTE FOR NO MORE THAN SIX achievements in this category that you have seen and feel are worthy of nomination. (More than six votes in this category will void all votes in this category.) Photos, color or black & white, were optional.

874 **Christine Ebersole**
as Carol
Sullivan & Son



875 **Conchata Ferrell**
as Berta
Two And A Half Men



876 **Katie Finneran**
as Leigh Henry
The Michael J. Fox Show



877 **Melissa Fumero**
as Detective Amy Santiago
Brooklyn Nine-Nine



878 **Ana Gasteyer**
as Sheila Shay
Suburgatory





Outstanding Supporting Actress In A Comedy Series

For a continuing performance in a comedy series. Emmy to performer. NOTE: VOTE FOR NO MORE THAN SIX achievements in this category that you have seen and feel are worthy of nomination. (More than six votes in this category will void all votes in this category.) Photos, color or black & white, were optional.

879

Betty Gilpin

as Dr. Carrie Roman
Nurse Jackie



880

Kerry Godliman

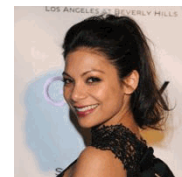
as Hannah
Derek



881

Ginger Gonzaga

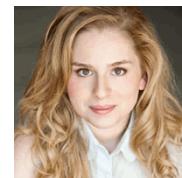
as Maya
Mixology



882

Allie Grant

as Lisa Shay
Suburgatory



883

Beth Grant

as Beverly Janoszewski
The Mindy Project





Outstanding Supporting Actress In A Comedy Series

For a continuing performance in a comedy series. Emmy to performer. NOTE: VOTE FOR NO MORE THAN SIX achievements in this category that you have seen and feel are worthy of nomination. (More than six votes in this category will void all votes in this category.) Photos, color or black & white, were optional.

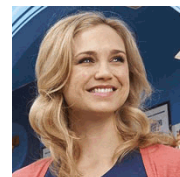
884 **Emma Greenwell**
as Mandy Milkovich
Shameless



885 **Tamsin Greig**
as Beverly Lincoln
Episodes



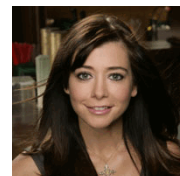
886 **Fiona Gubelmann**
as Jenna Mueller
Wilfred



887 **Shanola Hampton**
as Veronica Fisher
Shameless



888 **Alyson Hannigan**
as Lily Aldrin
How I Met Your Mother





Outstanding Supporting Actress In A Comedy Series

For a continuing performance in a comedy series. Emmy to performer. NOTE: VOTE FOR NO MORE THAN SIX achievements in this category that you have seen and feel are worthy of nomination. (More than six votes in this category will void all votes in this category.) Photos, color or black & white, were optional.

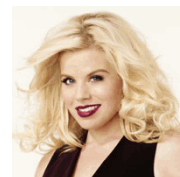
889 **Marcia Gay Harden**
as Diane
Trophy Wife



890 **Rachael Harris**
as Joanne Dunlevy
Surviving Jack



891 **Megan Hilty**
as Liz
Sean Saves The World



892 **Cheryl Hines**
as Dallas Royce
Suburgatory



893 **Sarah Hyland**
as Hayley Dunphy
Modern Family

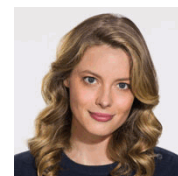




Outstanding Supporting Actress In A Comedy Series

For a continuing performance in a comedy series. Emmy to performer. NOTE: VOTE FOR NO MORE THAN SIX achievements in this category that you have seen and feel are worthy of nomination. (More than six votes in this category will void all votes in this category.) Photos, color or black & white, were optional.

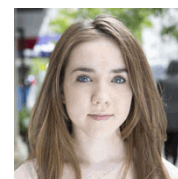
894 **Gillian Jacobs**
as Britta Perry
Community



895 **Allison Janney**
as Bonnie
Mom



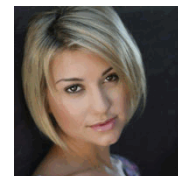
896 **Ruby Jerins**
as Grace Peyton
Nurse Jackie



897 **Rashida Jones**
as Ann Perkins
Parks And Recreation



898 **Chelsea Kane**
as Riley Perrin
Baby Daddy



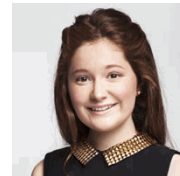


Outstanding Supporting Actress In A Comedy Series

For a continuing performance in a comedy series. Emmy to performer. NOTE: VOTE FOR NO MORE THAN SIX achievements in this category that you have seen and feel are worthy of nomination. (More than six votes in this category will void all votes in this category.) Photos, color or black & white, were optional.

899

Emma Kenney
as Debbie Gallagher
Shameless



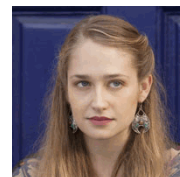
900

Jaime King
as Lemon Breeland
Hart Of Dixie



901

Jemima Kirke
as Jessa Johansson
Girls



902

Alexis Knapp
as Tori
Ground Floor



903

Swoosie Kurtz
as Joyce Flynn
Mike & Molly





Outstanding Supporting Actress In A Comedy Series

For a continuing performance in a comedy series. Emmy to performer. NOTE: VOTE FOR NO MORE THAN SIX achievements in this category that you have seen and feel are worthy of nomination. (More than six votes in this category will void all votes in this category.) Photos, color or black & white, were optional.

904

Linda Lavin

as Lorna

Sean Saves The World



905

Jane Leeves

as Joy Scroggs

Hot In Cleveland

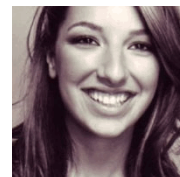


906

Vanessa Lengies

as Kacey

Mixology

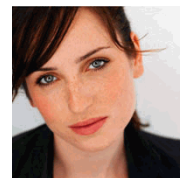


907

Zoe Lister-Jones

as Kate

Friends With Better Lives

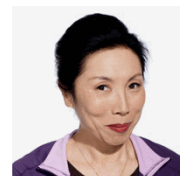


908

Jodi Long

as Ok Cha Sullivan

Sullivan & Son





Outstanding Supporting Actress In A Comedy Series

For a continuing performance in a comedy series. Emmy to performer. NOTE: VOTE FOR NO MORE THAN SIX achievements in this category that you have seen and feel are worthy of nomination. (More than six votes in this category will void all votes in this category.) Photos, color or black & white, were optional.

909

Susan Lucci
as Genevieve Delatour
Devious Maids



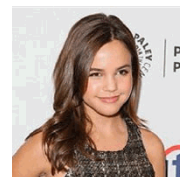
910

Jane Lynch
as Sue Sylvester
Glee



911

Bailee Madison
as Hillary
Trophy Wife



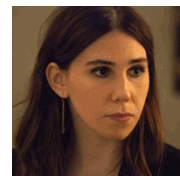
912

Wendie Malick
as Victoria Chase
Hot In Cleveland



913

Zosia Mamet
as Shoshanna Shapiro
Girls





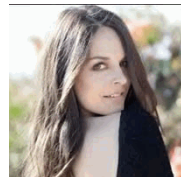
Outstanding Supporting Actress In A Comedy Series

For a continuing performance in a comedy series. Emmy to performer. NOTE: VOTE FOR NO MORE THAN SIX achievements in this category that you have seen and feel are worthy of nomination. (More than six votes in this category will void all votes in this category.) Photos, color or black & white, were optional.

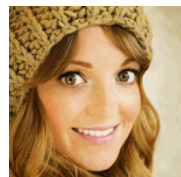
914 **Margo Martindale**
as Carol Miller
The Millers



915 **Yara Martinez**
as Adriana de Portago
Alpha House



916 **Jayma Mays**
as Debbie
The Millers



917 **Natascha McElhone**
as Karen
Californication



918 **Kate McKinnon**
as Various characters
Saturday Night Live





Outstanding Supporting Actress In A Comedy Series

For a continuing performance in a comedy series. Emmy to performer. NOTE: VOTE FOR NO MORE THAN SIX achievements in this category that you have seen and feel are worthy of nomination. (More than six votes in this category will void all votes in this category.) Photos, color or black & white, were optional.

919

Jessica McNamee

as Theresa

Sirens



920

Cynthia McWilliams

as Trina Shaw

Real Husbands Of Hollywood



921

Clara Memet

as Amber Weaver

The Neighbors

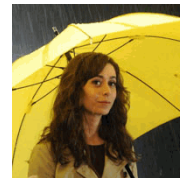


922

Cristin Milioti

as Tracy McConnell

How I Met Your Mother



923

Christa Miller

as Ellie Torres

Cougar Town



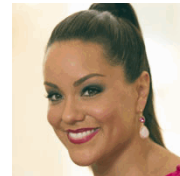


Outstanding Supporting Actress In A Comedy Series

For a continuing performance in a comedy series. Emmy to performer. NOTE: VOTE FOR NO MORE THAN SIX achievements in this category that you have seen and feel are worthy of nomination. (More than six votes in this category will void all votes in this category.) Photos, color or black & white, were optional.

924

Katy Mixon
as April Buchanon
Eastbound & Down



925

Mircea Monroe
as Morning Randolph
Episodes



926

Natalie Morales
as Meg
Trophy Wife



927

Kate Mulgrew
as Galina "Red" Reznikov
Orange Is The New Black



928

Niecy Nash
as Didi Ortley
Getting On





Outstanding Supporting Actress In A Comedy Series

For a continuing performance in a comedy series. Emmy to performer. NOTE: VOTE FOR NO MORE THAN SIX achievements in this category that you have seen and feel are worthy of nomination. (More than six votes in this category will void all votes in this category.) Photos, color or black & white, were optional.

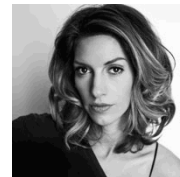
929

Toks Olagundoye
as Jackie Joyner-Kersey
The Neighbors



930

Dawn Olivieri
as Monica Talbot
House of Lies



931

Kaitlin Olson
as Deandra "Dee" Reynolds
It's Always Sunny In Philadelphia



932

Hayley Orrantia
as Erica Goldberg
The Goldbergs



933

Angel Parker
as Tasha Davenport
Lab Rats





Outstanding Supporting Actress In A Comedy Series

For a continuing performance in a comedy series. Emmy to performer. NOTE: VOTE FOR NO MORE THAN SIX achievements in this category that you have seen and feel are worthy of nomination. (More than six votes in this category will void all votes in this category.) Photos, color or black & white, were optional.

934 **Nasim Pedrad**
as Various characters
Saturday Night Live



935 **Chelsea Peretti**
as Gina Linetti
Brooklyn Nine-Nine



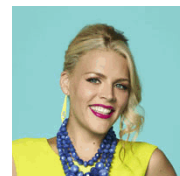
936 **Kathleen Rose Perkins**
as Carol Rance
Episodes



937 **Rhea Perlman**
as Thelma Katz
Kirstie



938 **Busy Phillipps**
as Laurie Keller
Cougar Town





Outstanding Supporting Actress In A Comedy Series

For a continuing performance in a comedy series. Emmy to performer. NOTE: VOTE FOR NO MORE THAN SIX achievements in this category that you have seen and feel are worthy of nomination. (More than six votes in this category will void all votes in this category.) Photos, color or black & white, were optional.

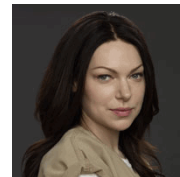
939

Aubrey Plaza
as April Ludgate
Parks And Recreation



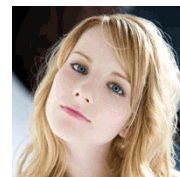
940

Laura Prepon
as Alex Vause
Orange Is The New Black



941

Melissa Rauch
as Bernadette Rostenkowski
The Big Bang Theory



942

Rondi Reed
as Peggy
Mike & Molly



943

Retta
as Donna Meagle
Parks And Recreation





Outstanding Supporting Actress In A Comedy Series

For a continuing performance in a comedy series. Emmy to performer. NOTE: VOTE FOR NO MORE THAN SIX achievements in this category that you have seen and feel are worthy of nomination. (More than six votes in this category will void all votes in this category.) Photos, color or black & white, were optional.

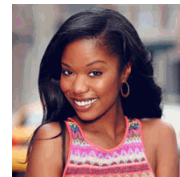
944

Naya Rivera
as Santana Lopez
Glee



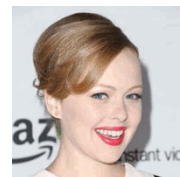
945

Xosha Roquemore
as Tamra
The Mindy Project



946

Alicia Sable
as Tammy Stackhouse
Alpha House



947

Amy Schumer
as Amy
Inside Amy Schumer



948

Amanda Setton
as Lauren Slotsky
The Crazy Ones

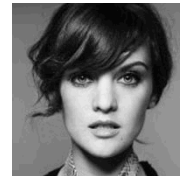




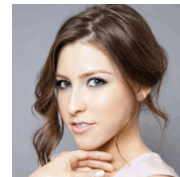
Outstanding Supporting Actress In A Comedy Series

For a continuing performance in a comedy series. Emmy to performer. NOTE: VOTE FOR NO MORE THAN SIX achievements in this category that you have seen and feel are worthy of nomination. (More than six votes in this category will void all votes in this category.) Photos, color or black & white, were optional.

949 **Frankie Shaw**
as Fabienne
Mixology



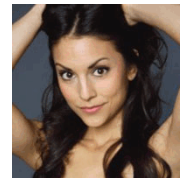
950 **Eden Sher**
as Sue Heck
The Middle



951 **Hannah Simone**
as Cece
New Girl



952 **Kate Simses**
as Liv
Mixology



953 **Anna Deavere Smith**
as Gloria Akalitus
Nurse Jackie





Outstanding Supporting Actress In A Comedy Series

For a continuing performance in a comedy series. Emmy to performer. NOTE: VOTE FOR NO MORE THAN SIX achievements in this category that you have seen and feel are worthy of nomination. (More than six votes in this category will void all votes in this category.) Photos, color or black & white, were optional.

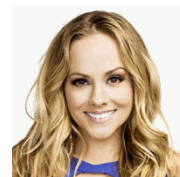
954 **Cobie Smulders**
as Robin Scherbatsky
How I Met Your Mother



955 **Jessica St. Clair**
as Suzanne MacNeil
Review



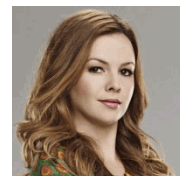
956 **Kelly Stables**
as Eden
The Exes



957 **Cecily Strong**
as Various characters
Saturday Night Live



958 **Amber Tamblyn**
as Jenny
Two And A Half Men

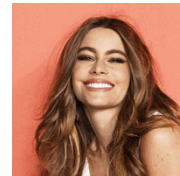




Outstanding Supporting Actress In A Comedy Series

For a continuing performance in a comedy series. Emmy to performer. NOTE: VOTE FOR NO MORE THAN SIX achievements in this category that you have seen and feel are worthy of nomination. (More than six votes in this category will void all votes in this category.) Photos, color or black & white, were optional.

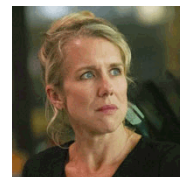
959 **Sofia Vergara**
as Gloria Delgado-Pritchett
Modern Family



960 **Michaela Watkins**
as Jackie
Trophy Wife



961 **Lauren Weedman**
as Doris
Looking



962 **Noël Wells**
as Various characters
Saturday Night Live



963 **Merritt Wever**
as Zoey Barkow
Nurse Jackie





Outstanding Supporting Actress In A Comedy Series

For a continuing performance in a comedy series. Emmy to performer. NOTE: VOTE FOR NO MORE THAN SIX achievements in this category that you have seen and feel are worthy of nomination. (More than six votes in this category will void all votes in this category.) Photos, color or black & white, were optional.

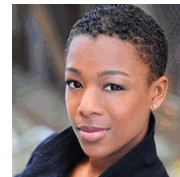
964

Betty White
as Elka Ostrovsky
Hot In Cleveland



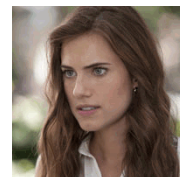
965

Samira Wiley
as Poussey Washington
Orange Is The New Black



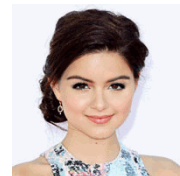
966

Allison Williams
as Marnie Michaels
Girls



967

Ariel Winter
as Alex Dunphy
Modern Family



968

Rebecca Wisocky
as Evelyn Powell
Devious Maids





Outstanding Supporting Actress In A Comedy Series

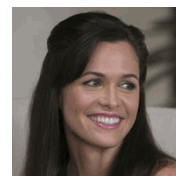
For a continuing performance in a comedy series. Emmy to performer. NOTE: VOTE FOR NO MORE THAN SIX achievements in this category that you have seen and feel are worthy of nomination. (More than six votes in this category will void all votes in this category.) Photos, color or black & white, were optional.

969

Christine Woods

as Jessica

Hello Ladies



970

Sasheer Zamata

as Various characters

Saturday Night Live



End of Category



Outstanding Supporting Actress In A Drama Series

For a continuing performance in a drama series. Emmy to performer. NOTE: VOTE FOR NO MORE THAN SIX achievements in this category that you have seen and feel are worthy of nomination. (More than six votes in this category will void all votes in this category.) Photos, color or black & white, were optional.

971 **Christa B. Allen**
as Charlotte Grayson
Revenge



972 **Mädchen Amick**
as Wendy Beauchamp
Witches Of East End



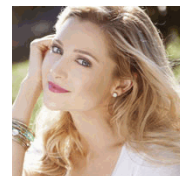
973 **Gillian Anderson**
as Meg Fitch
Crisis



974 **Morena Baccarin**
as Jessica Brody
Homeland



975 **Katherine Bailess**
as Kyle
Hit The Floor





Outstanding Supporting Actress In A Drama Series

For a continuing performance in a drama series. Emmy to performer. NOTE: VOTE FOR NO MORE THAN SIX achievements in this category that you have seen and feel are worthy of nomination. (More than six votes in this category will void all votes in this category.) Photos, color or black & white, were optional.

976

Christine Baranski

as Diane Lockhart

The Good Wife



977

Kristin Bauer van Straten

as Pam De Beaufort

True Blood

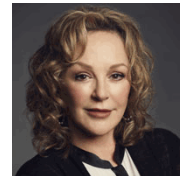


978

Bonnie Bedelia

as Camille Braverman

Parenthood



979

Emma Bell

as Emma Ryland

Dallas



980

Chloe Bennet

as Skye

Marvel's Agents of S.H.I.E.L.D.

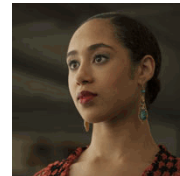




Outstanding Supporting Actress In A Drama Series

For a continuing performance in a drama series. Emmy to performer. NOTE: VOTE FOR NO MORE THAN SIX achievements in this category that you have seen and feel are worthy of nomination. (More than six votes in this category will void all votes in this category.) Photos, color or black & white, were optional.

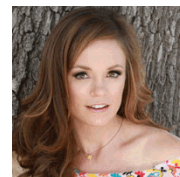
981 **Margot Bingham**
as Daughter Maitland
Boardwalk Empire



982 **Moon Bloodgood**
as Anne Glass
Falling Skies



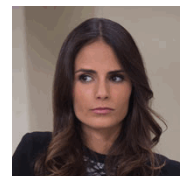
983 **Rachel Boston**
as Ingrid Beauchamp
Witches Of East End



984 **Betsy Brandt**
as Marie Schrader
Breaking Bad



985 **Jordana Brewster**
as Elena Ramos
Dallas



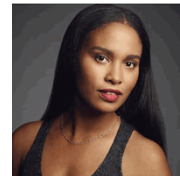


Outstanding Supporting Actress In A Drama Series

For a continuing performance in a drama series. Emmy to performer. NOTE: VOTE FOR NO MORE THAN SIX achievements in this category that you have seen and feel are worthy of nomination. (More than six votes in this category will void all votes in this category.) Photos, color or black & white, were optional.

986

Joy Bryant
as Jasmine Trussell
Parenthood



987

Sophia Bush
as Detective Erin Lindsay
Chicago P.D.



988

Anna Camp
as Sarah Newlin
True Blood



989

Jessica Capshaw
as Arizona Robbins
Grey's Anatomy



990

Amy Carlson
as Linda Reagan
Blue Bloods





Outstanding Supporting Actress In A Drama Series

For a continuing performance in a drama series. Emmy to performer. NOTE: VOTE FOR NO MORE THAN SIX achievements in this category that you have seen and feel are worthy of nomination. (More than six votes in this category will void all votes in this category.) Photos, color or black & white, were optional.

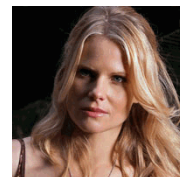
991 **Laura Carmichael**
as Lady Edith Crawley
Downton Abbey



992 **Jennifer Carpenter**
as Debra Morgan
Dexter



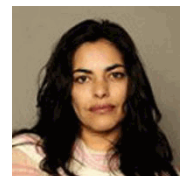
993 **Joelle Carter**
as Ava Crowder
Justified



994 **Sarah Carter**
as Maggie
Falling Skies



995 **Sarita Choudhury**
as Mira Berenson
Homeland

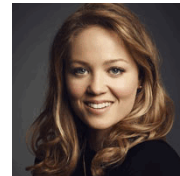




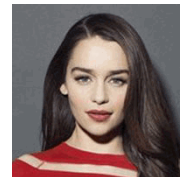
Outstanding Supporting Actress In A Drama Series

For a continuing performance in a drama series. Emmy to performer. NOTE: VOTE FOR NO MORE THAN SIX achievements in this category that you have seen and feel are worthy of nomination. (More than six votes in this category will void all votes in this category.) Photos, color or black & white, were optional.

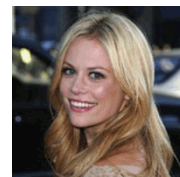
996 **Erika Christensen**
as Julia Braverman-Graham
Parenthood



997 **Emilia Clarke**
as Daenerys Targaryen
Game Of Thrones



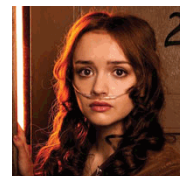
998 **Claire Coffee**
as Adalind Schade
Grimm



999 **Lauren Cohan**
as Maggie Greene
The Walking Dead



1000 **Olivia Cooke**
as Emma Decody
Bates Motel

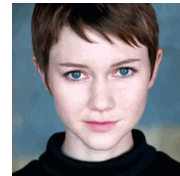




Outstanding Supporting Actress In A Drama Series

For a continuing performance in a drama series. Emmy to performer. NOTE: VOTE FOR NO MORE THAN SIX achievements in this category that you have seen and feel are worthy of nomination. (More than six votes in this category will void all votes in this category.) Photos, color or black & white, were optional.

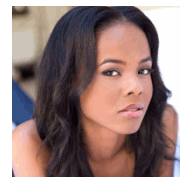
1001 **Valorie Curry**
as Emma Hill
The Following



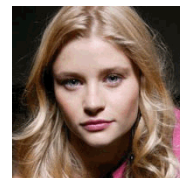
1002 **Jane Curtin**
as Joanne Webster
Unforgettable



1003 **Dana Davis**
as Carmen Phillips
Franklin & Bash



1004 **Emilie de Ravin**
as Belle/Lacey
Once Upon A Time



1005 **Caroline Dhavernas**
as Alana Bloom
Hannibal



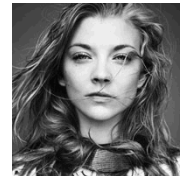


Outstanding Supporting Actress In A Drama Series

For a continuing performance in a drama series. Emmy to performer. NOTE: VOTE FOR NO MORE THAN SIX achievements in this category that you have seen and feel are worthy of nomination. (More than six votes in this category will void all votes in this category.) Photos, color or black & white, were optional.

1006

Natalie Dormer
as Margaery Tyrell
Game Of Thrones



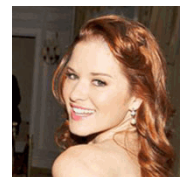
1007

Kerris Dorsey
as Bridget Donovan
Ray Donovan



1008

Sarah Drew
as April Kepner
Grey's Anatomy



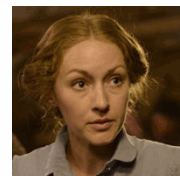
1009

Vanessa Ferlito
as Catherine "Charlie" DeMarco
Graceland



1010

Jennifer Ferrin
as Louise Ellison
Hell On Wheels





Outstanding Supporting Actress In A Drama Series

For a continuing performance in a drama series. Emmy to performer. NOTE: VOTE FOR NO MORE THAN SIX achievements in this category that you have seen and feel are worthy of nomination. (More than six votes in this category will void all votes in this category.) Photos, color or black & white, were optional.

1011 **Frances Fisher**
as Lucille Langston
Resurrection



1012 **Caitlin FitzGerald**
as Libby Masters
Masters of Sex



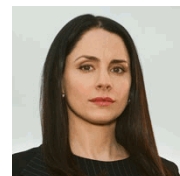
1013 **Megan Follows**
as Queen Catherine
Reign



1014 **Crystal Fox**
as Hanna Young
Tyler Perry's The Haves And The Have Nots



1015 **Laura Fraser**
as Lydia Rodarte-Quayle
Breaking Bad

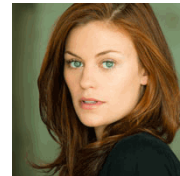




Outstanding Supporting Actress In A Drama Series

For a continuing performance in a drama series. Emmy to performer. NOTE: VOTE FOR NO MORE THAN SIX achievements in this category that you have seen and feel are worthy of nomination. (More than six votes in this category will void all votes in this category.) Photos, color or black & white, were optional.

1016 **Cassidy Freeman**
as Cady Longmire
Longmire



1017 **Joanne Froggatt**
as Anna Bates
Downton Abbey



1018 **Seychelle Gabriel**
as Lourdes
Falling Skies



1019 **Aimee Garcia**
as Jamie Batista
Dexter



1020 **Lauren German**
as Leslie Shay
Chicago Fire





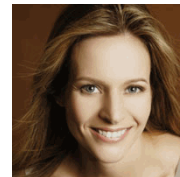
Outstanding Supporting Actress In A Drama Series

For a continuing performance in a drama series. Emmy to performer. NOTE: VOTE FOR NO MORE THAN SIX achievements in this category that you have seen and feel are worthy of nomination. (More than six votes in this category will void all votes in this category.) Photos, color or black & white, were optional.

1021 **Kelli Giddish**
as Detective Amanda Rollins
Law & Order: Special Victims Unit



1022 **Jessalyn Gilsig**
as Siggie Haraldson
Vikings



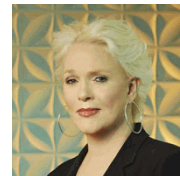
1023 **Kearran Giovanni**
as Det. Amy Sykes
Major Crimes



1024 **Annabeth Gish**
as Charlotte Millwright
The Bridge



1025 **Sharon Gless**
as Madeline Westen
Burn Notice

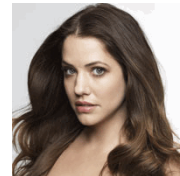




Outstanding Supporting Actress In A Drama Series

For a continuing performance in a drama series. Emmy to performer. NOTE: VOTE FOR NO MORE THAN SIX achievements in this category that you have seen and feel are worthy of nomination. (More than six votes in this category will void all votes in this category.) Photos, color or black & white, were optional.

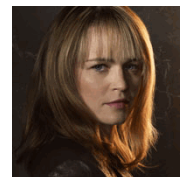
1026 **Julie Gonzalo**
as Rebecca Sutter
Dallas



1027 **Lauren Graham**
as Sarah Braverman
Parenthood



1028 **Sprague Grayden**
as Maya Callis
Low Winter Sun



1029 **Anna Gunn**
as Skyler White
Breaking Bad



1030 **Danai Gurira**
as Michonne
The Walking Dead





Outstanding Supporting Actress In A Drama Series

For a continuing performance in a drama series. Emmy to performer. NOTE: VOTE FOR NO MORE THAN SIX achievements in this category that you have seen and feel are worthy of nomination. (More than six votes in this category will void all votes in this category.) Photos, color or black & white, were optional.

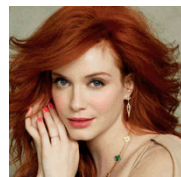
1031 **Miranda Hart**
as Chummy Noakes
Call The Midwife



1032 **Lena Headey**
as Cersei Lannister
Game Of Thrones



1033 **Christina Hendricks**
as Joan Harris
Mad Men



1034 **Taraji P. Henson**
as Detective Joss Carter
Person of Interest



1035 **Elizabeth Henstridge**
as Agent Jemma Simmons
Marvel's Agents of S.H.I.E.L.D.





Outstanding Supporting Actress In A Drama Series

For a continuing performance in a drama series. Emmy to performer. NOTE: VOTE FOR NO MORE THAN SIX achievements in this category that you have seen and feel are worthy of nomination. (More than six votes in this category will void all votes in this category.) Photos, color or black & white, were optional.

1036 **Linda Hunt**
as Hetty Lange
NCIS: Los Angeles



1037 **Penny Johnson-Jerald**
as Captain Victoria Gates
Castle



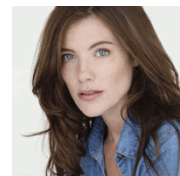
1038 **January Jones**
as Betty Francis
Mad Men



1039 **Tamala Jones**
as Lanie Parish
Castle



1040 **Devin Kelley**
as Maggie Langston
Resurrection





Outstanding Supporting Actress In A Drama Series

For a continuing performance in a drama series. Emmy to performer. NOTE: VOTE FOR NO MORE THAN SIX achievements in this category that you have seen and feel are worthy of nomination. (More than six votes in this category will void all votes in this category.) Photos, color or black & white, were optional.

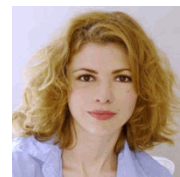
1041 **Katherine Kelly**
as Lady Mae Loxley
Mr Selfridge (Masterpiece)



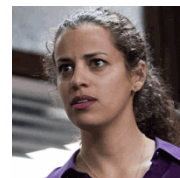
1042 **Emily Kinney**
as Beth Greene
The Walking Dead



1043 **Kasha Kropinski**
as Ruth Cole
Hell On Wheels



1044 **Athena Lartanis**
as Dani Khalil
Low Winter Sun



1045 **Renée Lawless**
as Katheryn Cryer
Tyler Perry's The Haves And The Have Nots





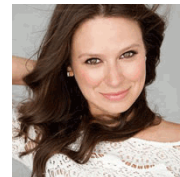
Outstanding Supporting Actress In A Drama Series

For a continuing performance in a drama series. Emmy to performer. NOTE: VOTE FOR NO MORE THAN SIX achievements in this category that you have seen and feel are worthy of nomination. (More than six votes in this category will void all votes in this category.) Photos, color or black & white, were optional.

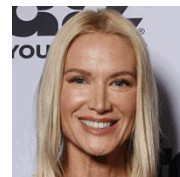
1046 **Heather Locklear**
as Rachel King
Franklin & Bash



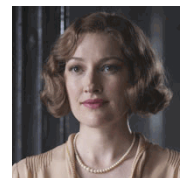
1047 **Katie Lowes**
as Quinn Perkins
Scandal



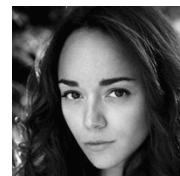
1048 **Kelly Lynch**
as Meg Bannock
Magic City



1049 **Kelly Macdonald**
as Margaret Thompson
Boardwalk Empire



1050 **Ashley Madekwe**
as Tituba
Salem

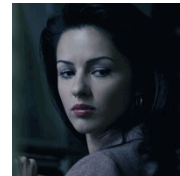




Outstanding Supporting Actress In A Drama Series

For a continuing performance in a drama series. Emmy to performer. NOTE: VOTE FOR NO MORE THAN SIX achievements in this category that you have seen and feel are worthy of nomination. (More than six votes in this category will void all votes in this category.) Photos, color or black & white, were optional.

1051 **Annet Mahendru**
as Nina
The Americans



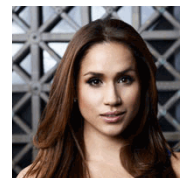
1052 **Paula Malcomson**
as Abby Donovan
Ray Donovan



1053 **Constance Marie**
as Regina Vasquez
Switched At Birth



1054 **Meghan Markle**
as Rachel Zane
Suits



1055 **Melissa McBride**
as Carol Peletier
The Walking Dead

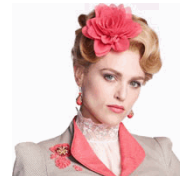




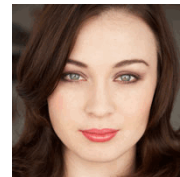
Outstanding Supporting Actress In A Drama Series

For a continuing performance in a drama series. Emmy to performer. NOTE: VOTE FOR NO MORE THAN SIX achievements in this category that you have seen and feel are worthy of nomination. (More than six votes in this category will void all votes in this category.) Photos, color or black & white, were optional.

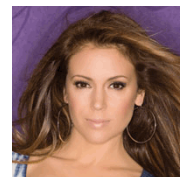
1056 **Katie McGrath**
as Lucy Westenra
Dracula



1057 **Robin McLeavy**
as Eva
Hell On Wheels



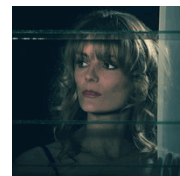
1058 **Alyssa Milano**
as Savannah "Savi" Davis
Mistresses



1059 **Ivana Milicevic**
as Carrie Hopewell
Banshee



1060 **Susan Misner**
as Sandra Beeman
The Americans

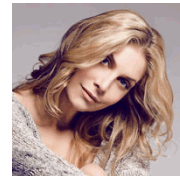




Outstanding Supporting Actress In A Drama Series

For a continuing performance in a drama series. Emmy to performer. NOTE: VOTE FOR NO MORE THAN SIX achievements in this category that you have seen and feel are worthy of nomination. (More than six votes in this category will void all votes in this category.) Photos, color or black & white, were optional.

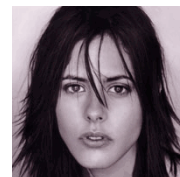
1061 **Elizabeth Mitchell**
as Rachel
Revolution



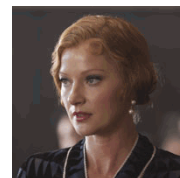
1062 **Sibongile Mlambo**
as Eme
Black Sails



1063 **Katherine Moennig**
as Lena
Ray Donovan



1064 **Gretchen Mol**
as Gillian Darmody
Boardwalk Empire



1065 **Michelle Monaghan**
as Maggie Hart
True Detective

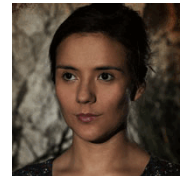




Outstanding Supporting Actress In A Drama Series

For a continuing performance in a drama series. Emmy to performer. NOTE: VOTE FOR NO MORE THAN SIX achievements in this category that you have seen and feel are worthy of nomination. (More than six votes in this category will void all votes in this category.) Photos, color or black & white, were optional.

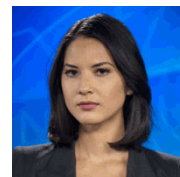
1066 **Catalina Sandino Moreno**
as Alma Ruiz
The Bridge



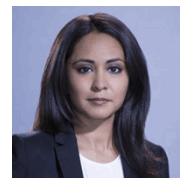
1067 **Emily Mortimer**
as Mackenzie McHale
The Newsroom



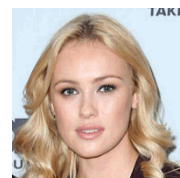
1068 **Olivia Munn**
as Sloan Sabbith
The Newsroom



1069 **Parminder Nagra**
as Agent Meera Malik
The Blacklist



1070 **Hannah New**
as Eleanor Guthrie
Black Sails

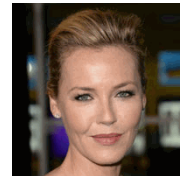




Outstanding Supporting Actress In A Drama Series

For a continuing performance in a drama series. Emmy to performer. NOTE: VOTE FOR NO MORE THAN SIX achievements in this category that you have seen and feel are worthy of nomination. (More than six votes in this category will void all votes in this category.) Photos, color or black & white, were optional.

1071 **Connie Nielsen**
as Lily Gray
The Following



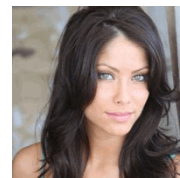
1072 **Barbara Niven**
as Peggy Beldon
Debbie Macomber's Cedar Cove



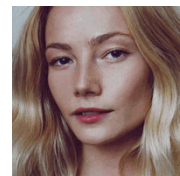
1073 **Sandra Oh**
as Cristina Yang
Grey's Anatomy



1074 **Valery Ortiz**
as Raquel Saldana
Hit The Floor



1075 **Clara Paget**
as Anne Bonny
Black Sails

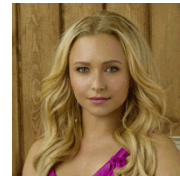




Outstanding Supporting Actress In A Drama Series

For a continuing performance in a drama series. Emmy to performer. NOTE: VOTE FOR NO MORE THAN SIX achievements in this category that you have seen and feel are worthy of nomination. (More than six votes in this category will void all votes in this category.) Photos, color or black & white, were optional.

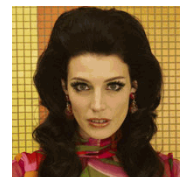
1076 **Hayden Panettiere**
as Juliette Barnes
Nashville



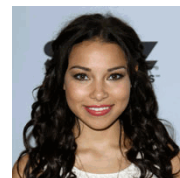
1077 **Archie Panjabi**
as Kalinda Sharma
The Good Wife



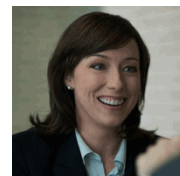
1078 **Jessica Paré**
as Megan Draper
Mad Men



1079 **Jessica Parker Kennedy**
as Max
Black Sails



1080 **Molly Parker**
as Jackie Sharp
House of Cards





Outstanding Supporting Actress In A Drama Series

For a continuing performance in a drama series. Emmy to performer. NOTE: VOTE FOR NO MORE THAN SIX achievements in this category that you have seen and feel are worthy of nomination. (More than six votes in this category will void all votes in this category.) Photos, color or black & white, were optional.

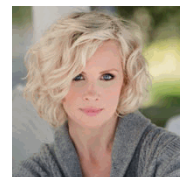
1081 **Lana Parrilla**
as Evil Queen/Mayor Regina
Once Upon A Time



1082 **Alison Pill**
as Maggie Jordan
The Newsroom



1083 **Monica Potter**
as Kristina Braverman
Parenthood



1084 **Carrie Preston**
as Arlene Fowler Bellefleur
True Blood



1085 **Lara Pulver**
as Clarice Orsini
Da Vinci's Demons





Outstanding Supporting Actress In A Drama Series

For a continuing performance in a drama series. Emmy to performer. NOTE: VOTE FOR NO MORE THAN SIX achievements in this category that you have seen and feel are worthy of nomination. (More than six votes in this category will void all votes in this category.) Photos, color or black & white, were optional.

1086

Molly Quinn
as Alexis Castle
Castle



1087

Savannah Paige Rae
as Sydney Graham
Parenthood



1088

Sarah Rafferty
as Donna Paulsen
Suits



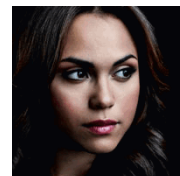
1089

Sara Ramirez
as Callie Torres
Grey's Anatomy



1090

Monica Raymund
as Gabriella Dawson
Chicago Fire





Outstanding Supporting Actress In A Drama Series

For a continuing performance in a drama series. Emmy to performer. NOTE: VOTE FOR NO MORE THAN SIX achievements in this category that you have seen and feel are worthy of nomination. (More than six votes in this category will void all votes in this category.) Photos, color or black & white, were optional.

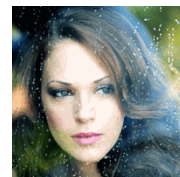
1091 **Vanessa Redgrave**
as Helen Hartrampf
Black Box



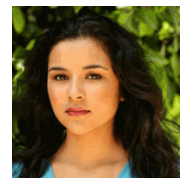
1092 **Emily Bett Rickards**
as Felicity Smoak
Arrow



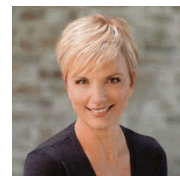
1093 **Amanda Righetti**
as Grace Van Pelt
The Mentalist



1094 **Emily Rios**
as Adriana Mendez
The Bridge



1095 **Teryl Rothery**
as Grace Sherman
Debbie Macomber's Cedar Cove





Outstanding Supporting Actress In A Drama Series

For a continuing performance in a drama series. Emmy to performer. NOTE: VOTE FOR NO MORE THAN SIX achievements in this category that you have seen and feel are worthy of nomination. (More than six votes in this category will void all votes in this category.) Photos, color or black & white, were optional.

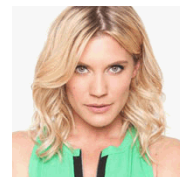
1096 **Kelly Rowan**
as Natalie Vincent
Perception



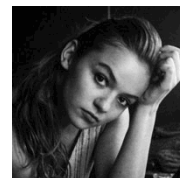
1097 **Daniela Ruah**
as Kensi Blye
NCIS: Los Angeles



1098 **Katee Sackhoff**
as Victoria "Vic" Moretti
Longmire



1099 **Morgan Saylor**
as Dana Brody
Homeland



1100 **Amy Seimetz**
as Danette Leeds
The Killing

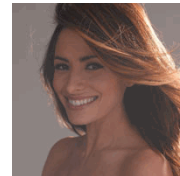




Outstanding Supporting Actress In A Drama Series

For a continuing performance in a drama series. Emmy to performer. NOTE: VOTE FOR NO MORE THAN SIX achievements in this category that you have seen and feel are worthy of nomination. (More than six votes in this category will void all votes in this category.) Photos, color or black & white, were optional.

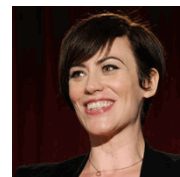
1101 **Sarah Shahi**
as Sameen Shaw
Person of Interest



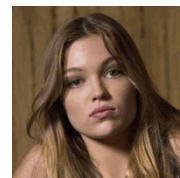
1102 **Kiernan Shipka**
as Sally Draper
Mad Men



1103 **Maggie Siff**
as Tara Knowles
Sons Of Anarchy



1104 **Lili Simmons**
as Rebecca Bowman
Banshee



1105 **Maggie Smith**
as Violet, Dowager Countess of Grantham
Downton Abbey





Outstanding Supporting Actress In A Drama Series

For a continuing performance in a drama series. Emmy to performer. NOTE: VOTE FOR NO MORE THAN SIX achievements in this category that you have seen and feel are worthy of nomination. (More than six votes in this category will void all votes in this category.) Photos, color or black & white, were optional.

1106

Victoria Smurfit
as Lady Jayne Wetherby
Dracula



1107

Marina Squerciati
as Officer Kim Burgess
Chicago P.D.



1108

Darby Stanchfield
as Abby Whelan
Scandal



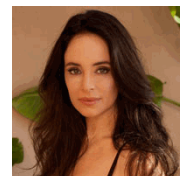
1109

Julia Sarah Stone
as Lyric
The Killing



1110

Madeleine Stowe
as Victoria Grayson
Revenge





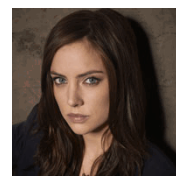
Outstanding Supporting Actress In A Drama Series

For a continuing performance in a drama series. Emmy to performer. NOTE: VOTE FOR NO MORE THAN SIX achievements in this category that you have seen and feel are worthy of nomination. (More than six votes in this category will void all votes in this category.) Photos, color or black & white, were optional.

1111 **Brenda Strong**
as Ann Ewing
Dallas



1112 **Jessica Stroup**
as Max Hardy
The Following



1113 **Susan Sullivan**
as Martha Rodgers
Castle



1114 **Tika Sumpter**
as Candace Young
Tyler Perry's The Haves And The Have Nots



1115 **Alyssa Sutherland**
as Princess Aslaug
Vikings





Outstanding Supporting Actress In A Drama Series

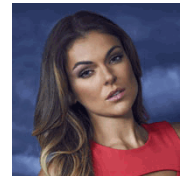
For a continuing performance in a drama series. Emmy to performer. NOTE: VOTE FOR NO MORE THAN SIX achievements in this category that you have seen and feel are worthy of nomination. (More than six votes in this category will void all votes in this category.) Photos, color or black & white, were optional.

1116

Serinda Swan

as Paige Arkin

Graceland

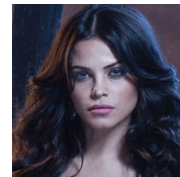


1117

Jenna Dewan Tatum

as Freya Beauchamp

Witches Of East End



1118

Holly Taylor

as Paige Jennings

The Americans



1119

Lili Taylor

as Captain Sandra Maldonado

Almost Human

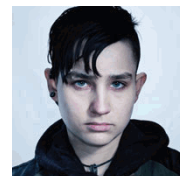


1120

Bex Taylor-Klaus

as Bullet

The Killing

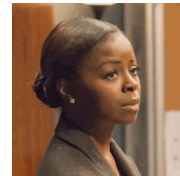




Outstanding Supporting Actress In A Drama Series

For a continuing performance in a drama series. Emmy to performer. NOTE: VOTE FOR NO MORE THAN SIX achievements in this category that you have seen and feel are worthy of nomination. (More than six votes in this category will void all votes in this category.) Photos, color or black & white, were optional.

1121 **Erica Tazel**
as Deputy U.S. Marshal Rachel Brooks
Justified



1122 **Lea Thompson**
as Kathryn Kennish
Switched At Birth



1123 **Susanna Thompson**
as Moira Queen
Arrow



1124 **Gina Torres**
as Jessica Pearson
Suits



1125 **Bitsie Tulloch**
as Juliette Silverton
Grimm





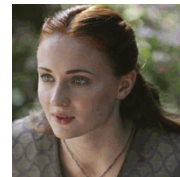
Outstanding Supporting Actress In A Drama Series

For a continuing performance in a drama series. Emmy to performer. NOTE: VOTE FOR NO MORE THAN SIX achievements in this category that you have seen and feel are worthy of nomination. (More than six votes in this category will void all votes in this category.) Photos, color or black & white, were optional.

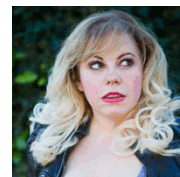
1126 **Bree Turner**
as Rosalee Calvert
Grimm



1127 **Sophie Turner**
as Sansa Stark
Game Of Thrones



1128 **Kirsten Vangsness**
as Penelope Garcia
Criminal Minds



1129 **Nadine Velazquez**
as D.D.A. Emma Rios
Major Crimes



1130 **Lisa Vidal**
as Kara Lynch
Being Mary Jane





Outstanding Supporting Actress In A Drama Series

For a continuing performance in a drama series. Emmy to performer. NOTE: VOTE FOR NO MORE THAN SIX achievements in this category that you have seen and feel are worthy of nomination. (More than six votes in this category will void all votes in this category.) Photos, color or black & white, were optional.

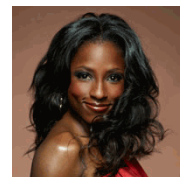
1131 **Meegan Warner**
as Mary Woodhull
Turn



1132 **Ming-Na Wen**
as Agent Malinda May
Marvel's Agents of S.H.I.E.L.D.



1133 **Rutina Wesley**
as Tara Thornton
True Blood



1134 **Mae Whitman**
as Amber Holt
Parenthood



1135 **Maisie Williams**
as Arya Stark
Game Of Thrones





Outstanding Supporting Actress In A Drama Series

For a continuing performance in a drama series. Emmy to performer. NOTE: VOTE FOR NO MORE THAN SIX achievements in this category that you have seen and feel are worthy of nomination. (More than six votes in this category will void all votes in this category.) Photos, color or black & white, were optional.

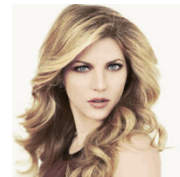
1136

Chandra Wilson
as Dr. Miranda Bailey
Grey's Anatomy



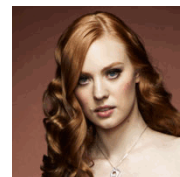
1137

Katheryn Winnick
as Lagertha
Vikings



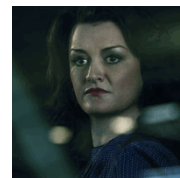
1138

Deborah Ann Woll
as Jessica Hamby
True Blood



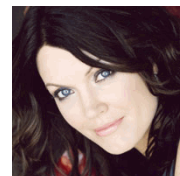
1139

Alison Wright
as Martha Hanson
The Americans



1140

Bellamy Young
as Mellie Grant
Scandal



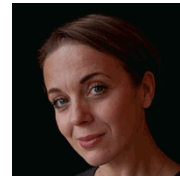
End of Category



Outstanding Supporting Actress In A Miniseries Or A Movie

For a performance in a miniseries or a movie. Emmy to performer. NOTE: VOTE FOR NO MORE THAN SIX achievements in this category that you have seen and feel are worthy of nomination. (More than six votes in this category will void all votes in this category.) Photos, color or black & white, were optional.

1141 **Amanda Abbington**
as Mary Morstan
Sherlock: His Last Vow (Masterpiece)



1142 **Anna Anissimova**
as Lacey
The Trials of Cate McCall



1143 **Tichina Arnold**
as Charlotte
A Day Late And A Dollar Short



1144 **Kathy Baker**
as Kathleen
Return To Zero



1145 **Angela Bassett**
as Marie Laveau
American Horror Story: Coven





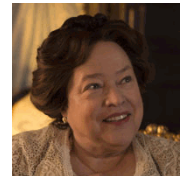
Outstanding Supporting Actress In A Miniseries Or A Movie

For a performance in a miniseries or a movie. Emmy to performer. NOTE: VOTE FOR NO MORE THAN SIX achievements in this category that you have seen and feel are worthy of nomination. (More than six votes in this category will void all votes in this category.) Photos, color or black & white, were optional.

1146

Kathy Bates

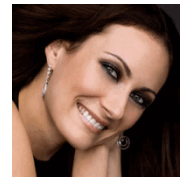
as Madame Delphine LaLaurie
American Horror Story: Coven



1147

Laura Benanti

as Elsa Schrader
The Sound of Music Live!



1148

Jacqueline Bisset

as Lady Cremone
Dancing On The Edge



1149

Carole Bouquet

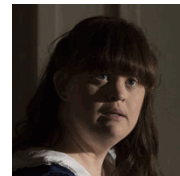
as Margaux Castevet
Rosemary's Baby



1150

Jamie Brewer

as Nan
American Horror Story: Coven





Outstanding Supporting Actress In A Miniseries Or A Movie

For a performance in a miniseries or a movie. Emmy to performer. NOTE: VOTE FOR NO MORE THAN SIX achievements in this category that you have seen and feel are worthy of nomination. (More than six votes in this category will void all votes in this category.) Photos, color or black & white, were optional.

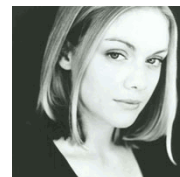
1151 **Ellen Burstyn**
as Olivia
Flowers In The Attic



1152 **Anna Chancellor**
as Lieutenant Monday
Fleming: The Man Who Would Be Bond



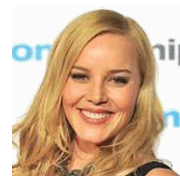
1153 **Christina Cole**
as Julie
Rosemary's Baby



1154 **Frances Conroy**
as Myrtle Snow
American Horror Story: Coven



1155 **Abbie Cornish**
as Belinda Mulrooney
Klondike





Outstanding Supporting Actress In A Miniseries Or A Movie

For a performance in a miniseries or a movie. Emmy to performer. NOTE: VOTE FOR NO MORE THAN SIX achievements in this category that you have seen and feel are worthy of nomination. (More than six votes in this category will void all votes in this category.) Photos, color or black & white, were optional.

1156

Alexa Davalos
as Jasmine Fontaine
Mob City



1157

Clea DuVall
as Emma Borden
Lizzie Borden Took An Ax



1158

Kimberly Elise
as Janelle
A Day Late And A Dollar Short



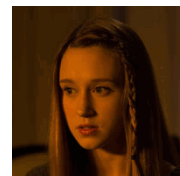
1159

Julie Ann Emery
as Ida Thurman
Fargo



1160

Taissa Farmiga
as Zoe Benson
American Horror Story: Coven





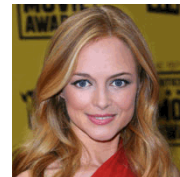
Outstanding Supporting Actress In A Miniseries Or A Movie

For a performance in a miniseries or a movie. Emmy to performer. NOTE: VOTE FOR NO MORE THAN SIX achievements in this category that you have seen and feel are worthy of nomination. (More than six votes in this category will void all votes in this category.) Photos, color or black & white, were optional.

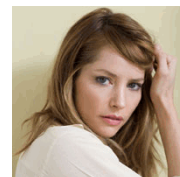
1161 **Ginnifer Goodwin**
as Jacqueline Kennedy
Killing Kennedy



1162 **Heather Graham**
as Corrine
Flowers In The Attic



1163 **Sienna Guillory**
as Mary Day
Luther



1164 **Kate Hudson**
as Rhonda
Clear History



1165 **Holly Hunter**
as Emma Parker
Bonnie & Clyde

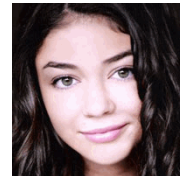




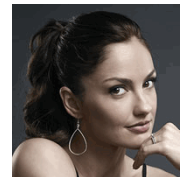
Outstanding Supporting Actress In A Miniseries Or A Movie

For a performance in a miniseries or a movie. Emmy to performer. NOTE: VOTE FOR NO MORE THAN SIX achievements in this category that you have seen and feel are worthy of nomination. (More than six votes in this category will void all votes in this category.) Photos, color or black & white, were optional.

1166 **Sarah Hyland**
as Blanche Barrow
Bonnie & Clyde



1167 **Minka Kelly**
as Bridgette Murphy
Full Circle



1168 **Joey King**
as Greta Grimly
Fargo



1169 **Regina King**
as Natalie Hawkins
The Gabby Douglas Story



1170 **Niatia "Lil Mama" Kirkland**
as Lisa "Left Eye" Lopez
Crazy Sexy Cool: The TLC Story





Outstanding Supporting Actress In A Miniseries Or A Movie

For a performance in a miniseries or a movie. Emmy to performer. NOTE: VOTE FOR NO MORE THAN SIX achievements in this category that you have seen and feel are worthy of nomination. (More than six votes in this category will void all votes in this category.) Photos, color or black & white, were optional.

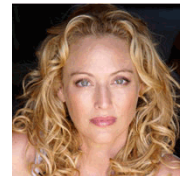
1171 **Maggie Lawson**
as Juliet O'Hara
Psych The Musical



1172 **Patti LuPone**
as Joan Ramsey
American Horror Story: Coven



1173 **Virginia Madsen**
as Virgie Arthur
Anna Nicole



1174 **Audra McDonald**
as Mother Abbess
The Sound of Music Live!



1175 **Janet McTeer**
as Jacquetta Woodville
The White Queen





Outstanding Supporting Actress In A Miniseries Or A Movie

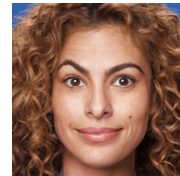
For a performance in a miniseries or a movie. Emmy to performer. NOTE: VOTE FOR NO MORE THAN SIX achievements in this category that you have seen and feel are worthy of nomination. (More than six votes in this category will void all votes in this category.) Photos, color or black & white, were optional.

1176

Eva Mendes

as Jennifer

Clear History



1177

S. Epatha Merkeron

as Miss Caroline

The Gabby Douglas Story



1178

Lucia Micarelli

as Annie Talarico

Treme

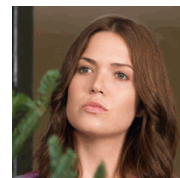


1179

Mandy Moore

as Natalie

Christmas In Conway (Hallmark Hall of Fame)



1180

Kirsten Nelson

as Karen Vick

Psych The Musical





Outstanding Supporting Actress In A Miniseries Or A Movie

For a performance in a miniseries or a movie. Emmy to performer. NOTE: VOTE FOR NO MORE THAN SIX achievements in this category that you have seen and feel are worthy of nomination. (More than six votes in this category will void all votes in this category.) Photos, color or black & white, were optional.

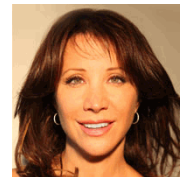
1181

Connie Nielsen
as Dr. Claire Holden
Return To Zero



1182

Cheri Oteri
as Gayle
Christmas In Conway (Hallmark Hall of Fame)



1183

Keke Palmer
as Thelma
The Trip To Bountiful



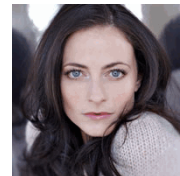
1184

Keke Palmer
as Chan'dra Stevens
Full Circle



1185

Lara Pulver
as Ann O'Neill
Fleming: The Man Who Would Be Bond





Outstanding Supporting Actress In A Miniseries Or A Movie

For a performance in a miniseries or a movie. Emmy to performer. NOTE: VOTE FOR NO MORE THAN SIX achievements in this category that you have seen and feel are worthy of nomination. (More than six votes in this category will void all votes in this category.) Photos, color or black & white, were optional.

1186

Lily Rabe

as Misty Day

American Horror Story: Coven

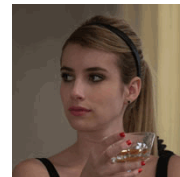


1187

Emma Roberts

as Madison Montgomery

American Horror Story: Coven



1188

Julia Roberts

as Dr. Emma Brookner

The Normal Heart



1189

Anika Noni Rose

as Paris

A Day Late And A Dollar Short

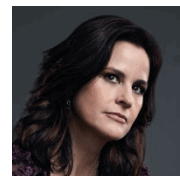


1190

Ally Sheedy

as Celeste Fontaine

Full Circle





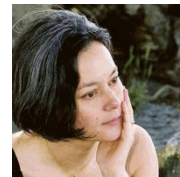
Outstanding Supporting Actress In A Miniseries Or A Movie

For a performance in a miniseries or a movie. Emmy to performer. NOTE: VOTE FOR NO MORE THAN SIX achievements in this category that you have seen and feel are worthy of nomination. (More than six votes in this category will void all votes in this category.) Photos, color or black & white, were optional.

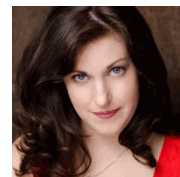
1191 **Gabourey Sidibe**
as Queenie
American Horror Story: Coven



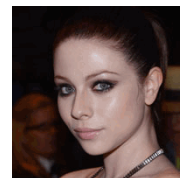
1192 **Meg Tilly**
as Lorna Corbett
Bomb Girls: Facing the Enemy



1193 **Allison Tolman**
as Molly Solverson
Fargo



1194 **Michelle Trachtenberg**
as Marina Oswald
Killing Kennedy



1195 **Tamara Tunie**
as Marie Van Der Veen
The Red Road





Outstanding Supporting Actress In A Miniseries Or A Movie

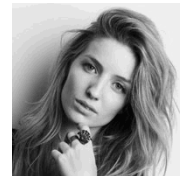
For a performance in a miniseries or a movie. Emmy to performer. NOTE: VOTE FOR NO MORE THAN SIX achievements in this category that you have seen and feel are worthy of nomination. (More than six votes in this category will void all votes in this category.) Photos, color or black & white, were optional.

1196

Annabelle Wallis

as Muriel Wright

Fleming: The Man Who Would Be Bond

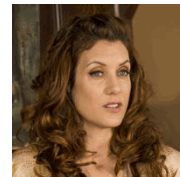


1197

Kate Walsh

as Gina Hess

Fargo

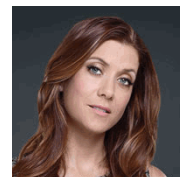


1198

Kate Walsh

as Trisha Campbell

Full Circle



1199

JoBeth Williams

as Charlotte

In My Dreams (Hallmark Hall of Fame)



1200

Vanessa Williams

as Jessie Mae Watts

The Trip To Bountiful



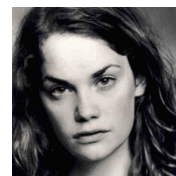


Outstanding Supporting Actress In A Miniseries Or A Movie

For a performance in a miniseries or a movie. Emmy to performer. NOTE: VOTE FOR NO MORE THAN SIX achievements in this category that you have seen and feel are worthy of nomination. (More than six votes in this category will void all votes in this category.) Photos, color or black & white, were optional.

1201

Ruth Wilson
as Alice Morgan
Luther



End of Category

Television Academy

2014 Primetime Emmy Awards Ballot

